



# Hot/Cold Benchtop Dry Block Calibrator

TRODEKS®



FREE Software Included!

## CL1500 Series

## SUPERMETER™

CL1500 calibrator with HHM290 thermometer and KTSS-14U-12-SMPW-M probe shown smaller than actual size.



Standard

- ✓ Operates from -5 to 125°C (23 to 257°F) at 23°C (73°F) Ambient
- ✓ Rugged, Portable Benchtop Design
- ✓ Fast, Accurate, Stable Readings
- ✓ Standard and Metric Well Designs Available
- ✓ 230 Vac Models CE Marked
- ✓ NIST Calibration Certificate Included
- ✓ RS232 Communications and FREE Software (Requires Windows PC)

TRODEKS's new CL1500 Series benchtop dry block probe calibrator is fast, accurate, and portable. It features a lightweight, rugged design suitable for both laboratory and field use. This hot/cold calibration source can accommodate probes of 6 different diameters and is available in either

115 or 230V versions. There are two different well styles available, standard and metric (shown on the next page). The CL1500 Series uses a custom fabricated metal enclosure together with a high performance PID temperature controller to achieve a high level of quality, reliability and safety. The calibrator has a temperature calibration range of -5 to 125°C (23 to 257°F). Each CL1500 comes complete with power cord, operator's manual, RS232 cable (RS232 to USB converter cable also included), software and NIST traceable calibration certificate. The CL1500 software allows the user to control and monitor the temperature and performance of the calibrator in real time. The user is presented with 3 displays of the current temperature and setpoint, an analog dial, a digital display and also a graph with adjustable scale. It also allows fast and easy changes to be made to the setpoint through the use of 10 presets or using the course adjustment knob and fine tune buttons.



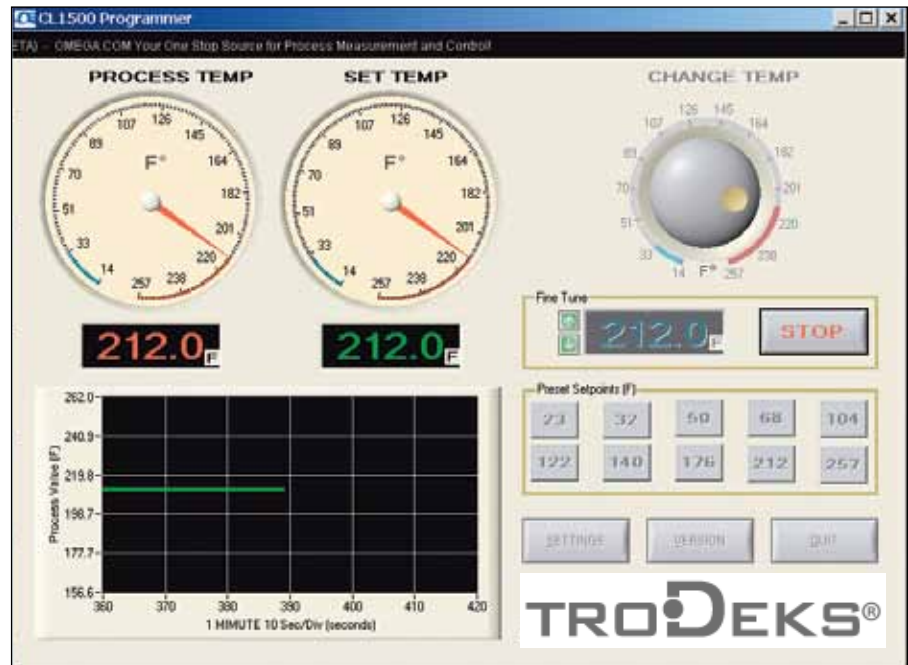
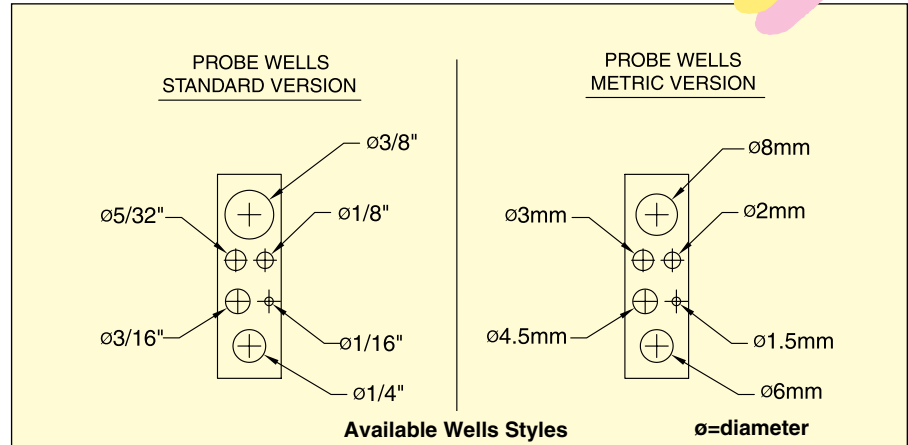
## SPECIFICATIONS

**Temperature Range:** -5 to 125°C (23 to 257°F) at 23°C (73°F) Ambient  
**Accuracy:** ±0.8°C (±1.5°F)  
**Stability:** ±0.25°C (±0.45°F)  
**Display Resolution:** 0.1 degree  
**Well-to-Well Uniformity:** ±0.55°C (1°F)  
**Well Depth:** 114.3 mm (4.5")  
**Stabilization:** 5 min  
**Heating Times**  
 -5°C to Ambient: 1 min  
 Ambient to 100°C: 3 min  
 100 to 125°C: 5 min  
**Cooling Times**  
 125 to 100°C: 1 min  
 100 to 0°C: 8 min  
 0 to -5°C: 4 min  
**Ambient Environmental Conditions**  
**Temperature:** 0 to 45°C (32 to 113°F)  
**Humidity:** 0 to 80% RH non-condensing  
**Internal Control Sensor:** Platinum RTD, 100 Ω, 0.00385, Class A  
**Power:** 90 to 240 Vac, 200 W  
**Dimensions:** 206 W x 79 H x 203 mm D (8.1 x 3.1 x 8")  
**Weight:** 2.8 kg (6.3 lb)

**Caution:** To avoid fire hazard or damage to your calibrator, always allow your calibrator to cool down to ambient temperature before returning to storage.

We make running changes when technical advances allow. Check at time of ordering for additional features.

## CL1500: Hot/Cold Dry Block Calibrator



Sample screen showing CL1500 software that is included.

To Order	
Model No.	Description
CL1500	Hot/cold dry block calibrator, 115 Vac, 1/16, 1/8, 5/32, 3/16, 1/4, and 3/8" diameter wells
CL1500M	Hot/cold dry block calibrator, 230 Vac 1.5, 2, 3, 4.5, 6 and 8 mm diameter wells

\* Insert "M" for metric wells, leave blank for standard.

## Accessories

Model No.	Description
HH806W	Wireless thermocouple thermometer
HHM290	Digital multimeter/infrared thermometer with laser sighting dot/circle switch
TJ36-CASS-316U-12-SMPW-M	Heavy-duty 12" transition, joint probe, Type K, 3/16" diameter ungrounded with sub-mini connector**

\*\* Consult sales for additional probe and meter options.

Comes complete with power cord, RS232 cable, RS232 to USB converter cable, free software and NIST-traceable calibration certificate at 0, 38, 100°C (32, 100, 212°F) and operator's manual.