

POSITIVE DISPLACEMENT FLOW METER FOR FUELS AND OILS

TRODEKS®

FPD3000 Series



- ✓ Aluminum Body
- ✓ FKM Seals
- ✓ Temperatures up to 80°C (176°F)
- ✓ NPT or BSP Threads
- ✓ DIN, JIS or ANSI Connection (Available on 1" and Larger Sizes)

The FPD3000 Series positive displacement flow meters are affordable and accurate. One primary feature is the ability to maintain consistent accuracy despite changing viscosity conditions. The meter's solid construction and excellent dynamic response are well suited to the measurement of fuels and oils as well as other non-abrasive lubricating fluids. Since there is no need for straight run piping upstream or downstream of the flowmeter, the FPD3000 flowmeters are simple to use and to install. The meter has good resolution and high accuracy at low flow rates.



SPECIFICATIONS

Accuracy: $\pm 0.5\%$ of reading, $\pm 1.0\%$ of reading ($\frac{1}{4}$ " models)

Repeatability: $\pm 0.03\%$

Fitting Type:

NPT: Female

BSP: "-BSP" option

DIN: "-DIN" option

JIS: "-JIS" option

ANSI: "-ANSI" option

Hall-Effect Sensor Power: 4.5 to 24 Vdc (7.5 mA)

Reed Sensor Power: 30 Vdc (500 mA)

Output Options:

Pulse Output: Standard

4 to 20 mA Transmitter:

"-D-A" option; no output on battery powered "-D" model

Display: 7-digit/12 mm (0.47") upper, 7-digit/7 mm (0.28") lower all

"-D" options

Rate: User defined

Total: Resettable

Acc-Total: Non-resettable

Minimum Viscosity: 1cPs

Maximum Viscosity: 1000 cPs standard

Maximum Pressure: See chart

on page F-3

Strainer Size: See chart on next page

Mounting: Shafts must be in a

horizontal plane

Electrical Connections: 2 x 12 mm (0.08 x 0.47"), fittings included

"-D-A" option

Cable Length: 1 m (3') stripped ends non-display models

Mounting: Pipe

Power: 4 to 20 mA, "-D-A" models

18 to 30 Vdc display, "-D" models

3 Vdc lithium battery (included)

Liquid Temperature: -40 to 80°C (-40 to 176°F)

Materials

Body: Aluminum

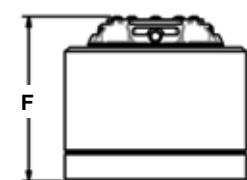
Enclosure: Polypropylene

Seals: FKM

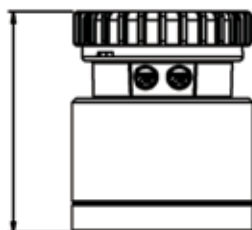
Fasteners: Stainless steel

Cable Insulation: PVC

Enclosure: NEMA 6 (IP67)



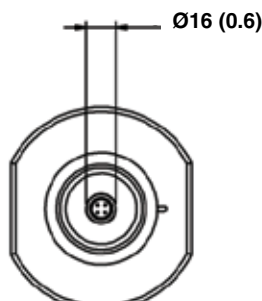
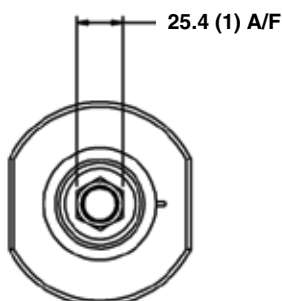
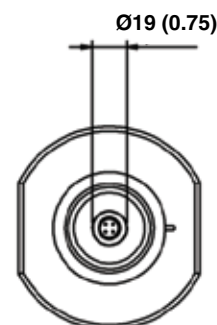
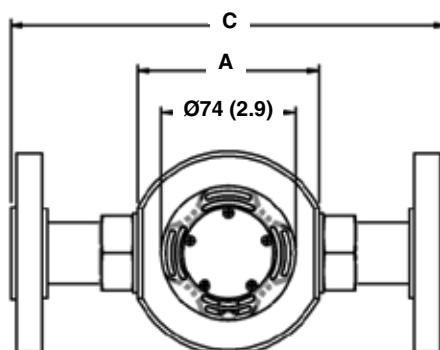
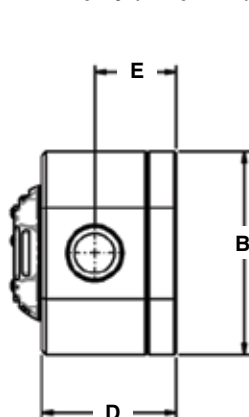
Standard



Display (-D options)

Pulsar and Display Height, F

Model No.	mm (inch)		Recommended Strainer
	Standard	-D options	
FPD3002	59 (2.3)	90 (3.5)	200 mesh (74 um)
FPD3003	59 (2.3)	90 (3.5)	200 mesh (74 um)
FPD3004	66 (2.6)	97 (3.8)	60 mesh (250 um)
FPD3034	79 (3.1)	110 (4.3)	60 mesh (250 um)
FPD3005	92 (3.6)	123 (4.8)	60 mesh (250 um)
FPD3006	120 (4.7)	151 (5.9)	60 mesh (250 um)
FPD3007	141 (5.5)	172 (6.7)	60 mesh (250 um)
FPD3008	See operator's manual for Dimensional drawings		
FPD3009	See operator's manual for Dimensional drawings		

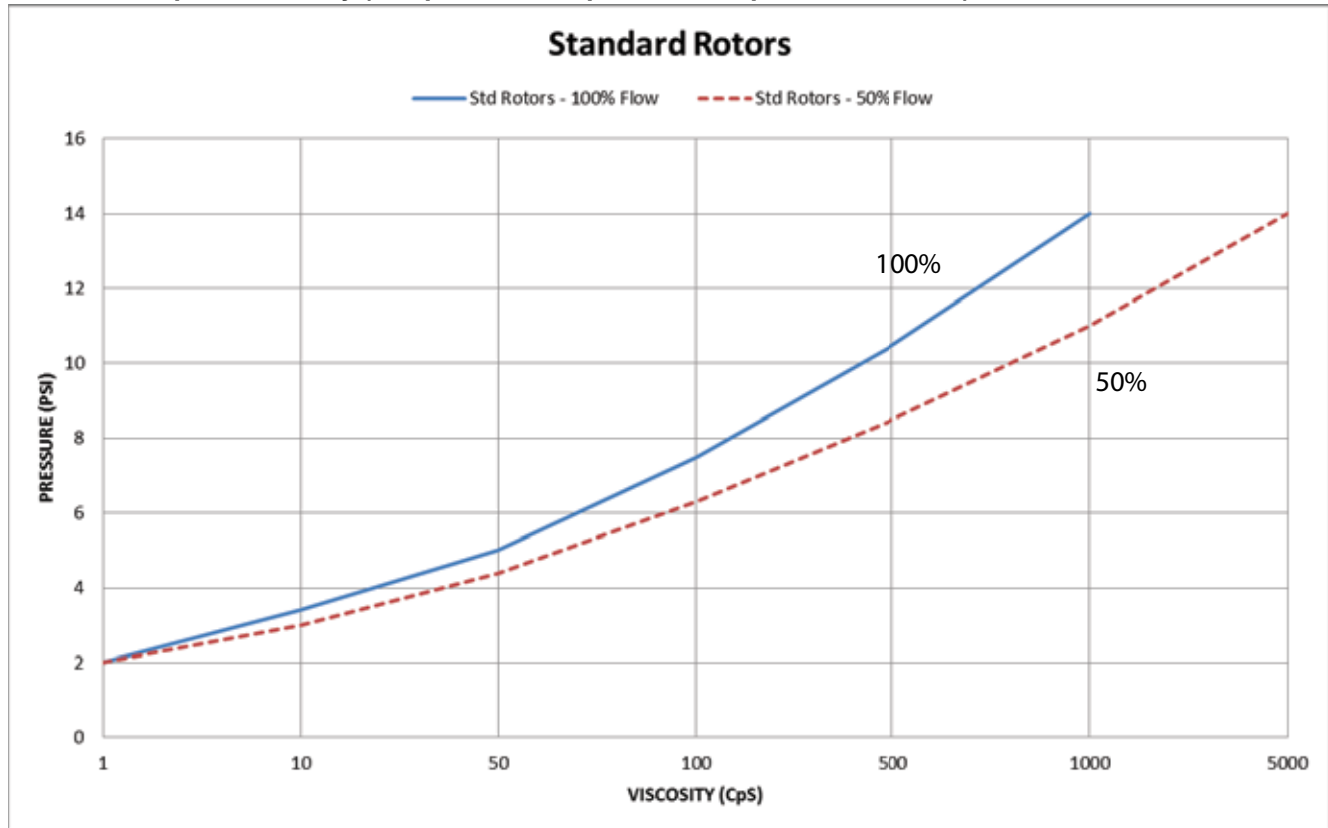


Ø = Diameter

Model No.	Meter and Flange, Dimensions: mm (inch)					
	Port Size	A	B	C*	D	E
FPD3002	¼"	71 (2.8)	74 (2.9)	N/A	42 (1.7)	25 (1)
FPD3003	¼"	71 (2.8)	74 (2.9)	N/A	42 (1.7)	24 (0.9)
FPD3004	½"	81 (3.2)	87 (3.4)	N/A	49 (1.9)	28 (1.1)
FPD3034	¾"	100 (3.9)	112 (4.4)	N/A	62 (2.4)	37 (1.5)
FPD3005	1"	100 (3.9)	112 (4.4)	240 (9.4)	75 (3)	45 (1.8)
FPD3006	1½"	120 (4.7)	137 (5.4)	240 (9.4)	103 (4.1)	61 (2.4)
FPD3007	2"	140 (5.5)	163 (6.4)	264 (10.4)	124 (4.9)	72 (2.8)
FPD3008	See operator's manual for Dimensional drawings					
FPD3009	See operator's manual for Dimensional drawings					

* Flanges

Pressure Drop vs. Viscosity (-HV pressure drop curves in operator's manual)



To Order

Model No.	Port Size	Flow Range		Maximum Pressure psi (Kpa)
		< 5 cPs	> 5 cPs	
FPD3002	¼"	2 to 100 LPH (0.5 to 26 GPH)	0.5 to 100 LPH (0.13 to 26 GPH)	1000 (6895)
FPD3003	¼"	25 to 500 LPH (6.6 to 132 GPH)	15 to 500 LPH (4 to 132 GPH)	1000 (6895)
FPD3004	½"	3 to 25 LPM (0.8 to 6.6 GPM)	2 to 30 LPM (0.5 to 8 GPM)	2000 (13790)
FPD3034	¾"	8 to 70 LPM (2 to 18.5 GPM)	3 to 80 LPM (0.8 to 21 GPM)	2000 (13790)
FPD3005	1"	10 to 100 LPM (2.6 to 26 GPM)	6 to 120 LPM (1.6 to 32 GPM)	2000 (13790)
FPD3006	1½"	15 to 235 LPM (4 to 62 GPM)	10 to 250 LPM (2.6 to 66 GPM)	1200 (8274)
FPD3007	2"	15 to 500 LPM (4 to 130 GPM)	16 to 500 LPM (4 to 130 GPM)	1000 (6895)
FPD3008	3"	60 to 600 LPM (15.8 to 158 GPM)	20 to 733 LPM (5.3 to 193 GPM)	175 (1206)
FPD3009	4"	220 to 1000 LPM (58.1 to 264 GPM)	120 to 1200 LPM (31.7 to 317 GPM)	175 (1206)

Comes complete with lithium battery and operator's manual.

For units with a battery powered digital display add **"-D"** to the model number, for an additional charge.

For units with a DC powered digital display and 4 to 20 mA output add **"-D-A"** to the model number, for an additional charge.

For units with BSP connections add **"-BSP"** to the model number, no additional charge.

For units with DIN flanges add **"-DIN"** to the model number, for an additional charge (1" and larger only).

For units with JIS flanges add **"-JIS"** to the model number, for an additional charge (1" and larger only).

For units with ANSI flanges add **"-ANSI"** to the model number, for an additional charge (1" and larger only).

For units with high viscosity rotors add **"-HV"** to the model number, for an additional charge.