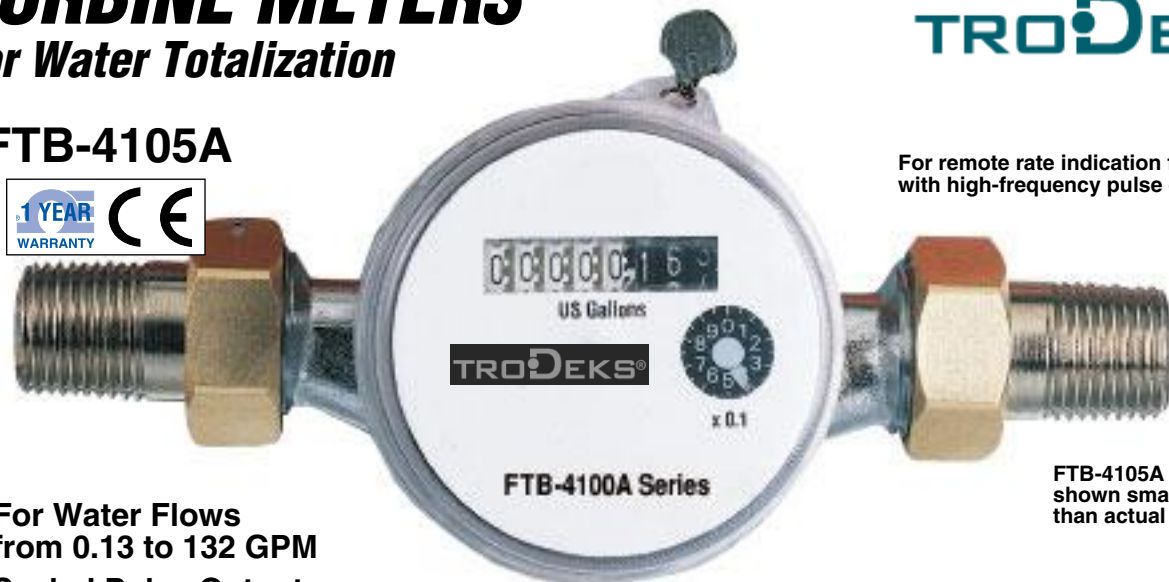


TURBINE METERS

For Water Totalization

TRODEKS®

FTB-4105A



For remote rate indication for units with high-frequency pulse output.

FTB-4105A shown smaller than actual size.

- ✓ For Water Flows from 0.13 to 132 GPM
- ✓ Scaled Pulse Output Available for Remote Totalization
- ✓ For Hot or Cold Water Applications
- ✓ Up to $\pm 1.5\%$ of Reading Accuracy

Designed for water billing applications, TRODEKS's FTB-4100A flowmeters are highly accurate and feature tamper-resistant, non-resettable totalizers. The large faces are easy to read.

Optional reed relay scaled pulse outputs allow for remote totalization [1.8 m (6') of cable included]. The pulse output option is factory installed and must be requested at the time of order.

All FTB flowmeters feature built-in strainers and trickle flow indication and come with locking nuts and coupling pieces.

SPECIFICATIONS

Accuracy: From 10% of continuous to maximum flow: $\pm 1.5\%$ of reading; below 10% of continuous flow: $\pm 2\%$ of reading

Power for Pulse Output: 6 to 16 Vdc

Maximum Temp: 90°C (200°F)

Maximum Pressure: 150 psi

Pulse Outputs (Reed Relay):

FTB-4100A-P Series: 1 gal/pulse (for remote totalization only)

Maximum Reading (Gallons): 10 million for $\frac{1}{2}$ and $\frac{3}{4}$ "; 100 million for 1, $1\frac{1}{4}$, and $1\frac{1}{2}$ "

Wetted Parts: Brass body, stainless steel polyimide (fiberglass), polypropylene, EPDM O-ring

Installation Requirements: 10 pipe diameters upstream, 5 downstream

Mounting: Horizontal mounting required for 1, $1\frac{1}{4}$, and $1\frac{1}{2}$ " models; vertical mounting for $\frac{1}{2}$ and $\frac{3}{4}$ " sizes only

Compatible Meter: DPF70

To Order

Model No.	Flow Rate (GPM)			Conn. MNPT	Body Length mm (inch)	NPT Length mm (inch)	Height mm (inch)	Width mm (inch)	Press. Drop*	Weight kg (lb)	Max Temp °C (°F)
	Min	Cont.	Max								
FTB-4105A	0.13	6.6	13	$\frac{1}{2}$	110 (4.33)	60 (2.36)	70 (2.75)	70 (2.75)	3.6	0.5 (1.1)	93 (200)
FTB-4105A-P	0.13	6.6	13	$\frac{1}{2}$	110 (4.33)	60 (2.36)	70 (2.75)	70 (2.75)	3.6	0.5 (1.1)	93 (200)
FTB-4107A	0.22	11	20	$\frac{3}{4}$	130 (5.12)	63 (2.48)	77 (3.03)	70 (2.75)	3.6	0.6 (1.4)	93 (200)
FTB-4107A-P	0.22	11	20	$\frac{3}{4}$	130 (5.12)	63 (2.48)	77 (3.03)	70 (2.75)	3.6	0.6 (1.4)	93 (200)
FTB-4110A	0.5	26.4	50.0	1	260 (10.24)	67 (2.64)	140 (5.51)	92 (3.62)	3.6	2.5 (5.5)	93 (200)
FTB-4110A-P	0.5	26.4	50.0	1	260 (10.24)	67 (2.64)	140 (5.51)	92 (3.62)	3.6	2.5 (5.5)	93 (200)
FTB-4112A	0.5	26.4	50.0	$1\frac{1}{4}$	260 (10.24)	73 (2.87)	140 (5.51)	92 (3.62)	3.6	2.5 (5.5)	93 (200)
FTB-4112A-P	0.5	26.4	50.0	$1\frac{1}{4}$	260 (10.24)	73 (2.87)	140 (5.51)	92 (3.62)	3.6	2.5 (5.5)	93 (200)
FTB-4115A	0.8	44.0	90.0	$1\frac{1}{2}$	300 (11.81)	73 (2.87)	140 (5.51)	120 (4.72)	3.6	5.4 (12.0)	93 (200)
FTB-4115A-P	0.8	44.0	90.0	$1\frac{1}{2}$	300 (11.81)	73 (2.87)	140 (5.51)	120 (4.72)	3.6	5.4 (12.0)	93 (200)
FTB-4120A	1.3	66.0	132.0	2	270 (10.63)	ANSI 150# Flange	226 (8.90)	155 (6.10)	2.9	12.4 (27.0)	90 (194)
FTB-4120A-P	1.3	66.0	132.0	2	270 (10.63)		226 (8.90)	155 (6.10)	2.9	12.4 (27.0)	90 (194)

Models with suffix "P" are for reed relay pulse output, for remote totalization only. $\frac{1}{2}$ to $1\frac{1}{2}$ " have NPT connections; the 2" meters have flanged connections.

* Pressure loss is at continuous flow rate. ** Consult Flow Engineering Department.

Comes with complete operator's manual.

Ordering Examples: FTB-4105A-P, pulse output meter with minimum flow rate of 0.13 GPM and maximum flow rate of 13.0 GPM, maximum water temperature 90°C (200°F).

FTB-4115A, pulse output meter with minimum flow rate of 0.8 GPM and maximum flow rate of 90.0 GPM, maximum water temperature 93°C (200°F).