

# TOP MOUNTING PLATES

## FOR LC1001/LC1011 SERIES LOAD CELLS

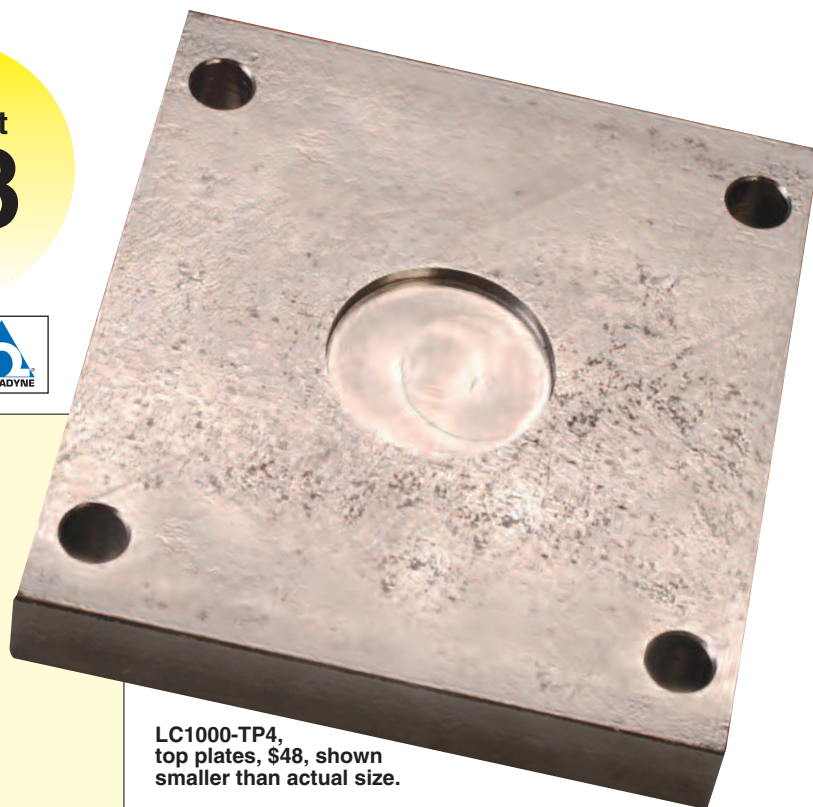
### NICKEL-PLATED STEEL OR 17-4 PH STAINLESS STEEL

#### LC1000 Series

Top Mounting Plates for Ranges  
500 lb to 300,000 lb  
227 kg to 136,116 kg

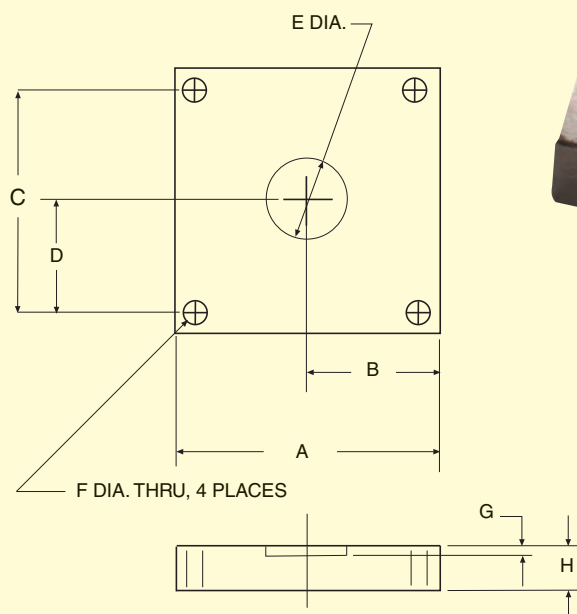
1 Newton = 0.2248 lb  
1 daNewton = 10 Newtons  
1 lb = 454 g  
1 t = 1000 kg = 2204 lb

Starts at  
**\$48**



LC1000-TP4,  
top plates, \$48, shown  
smaller than actual size.

TOP PLATES for LC1001/LC1011 Load Cells



LC1011-10K, \$895, shown  
smaller than actual size.



**MOST POPULAR MODELS HIGHLIGHTED!**

To Order (Specify Model Number)					Dimensions: mm (in)							
CAPACITY lb (kg)	NI PLATED STEEL	PRICE	STAINLESS STEEL	PRICE	A	B	C	D	E	F	G	H
500 to 50,000 (227 to 22,686)	LC1000-TP4	\$48	LC1000-TP4-SS	\$80	114 (4.50)	57 (2.25)	95 (3.75)	46 (1.88)	38 (1.50)	10 (0.41)	3.2 (0.125)	19 (0.75)
100,000 (45,372)	LC1000-TP6	96	LC1000-TP6-SS	190	152 (6.00)	76 (3.00)	121 (4.75)	60 (2.38)	51 (2.00)	13 (0.53)	3.2 (0.125)	25 (1.00)
200,000 (90,744)	LC1000-TP8	198	LC1000-TP8-SS	396	203 (8.00)	102 (4.00)	165 (6.50)	83 (3.25)	70 (2.75)	17 (0.66)	4.8 (0.188)	32 (1.25)
300,000 (136,116)	LC1000-TP9	†	N/A		229 (9.00)	114 (4.50)	184 (7.25)	92 (3.63)	83 (3.25)	23 (0.78)	4.8 (0.188)	38 (1.50)

† Consult Engineering.

**Ordering Examples:** LC1000-TP4-SS, stainless steel top plate for LC1001/LC1011 load cells, 500 to 50K lb range, \$80. LC1000-TP6, nickel-plated steel top plate for LC1001/LC1011 load cells, 100,000 lb range, \$68. LC1000-TP9, nickel-plated steel top plate for LC1001/LC1011 load cells, 300,000 lb range, \$136.

Recommended Reference Book: Strength of Materials and Structures,  
ME-1758, \$138 See Section Y, For Additional Books

