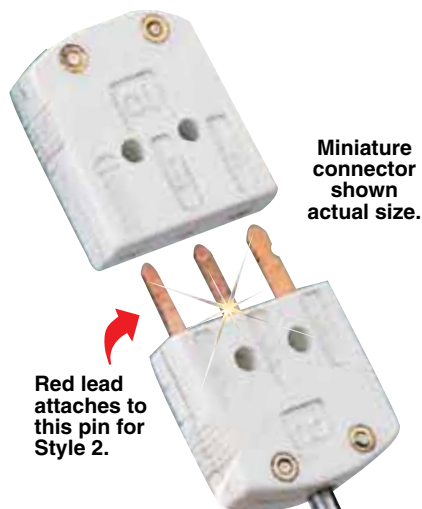


Platinum RTD Probes



Type PR-17 Mating Female Connector Included.



Also Available with PFA Coating

Standard Dimension PR-17 Series Miniature Quick Disconnect Probes

General purpose probes with a $\frac{1}{8}$ and $\frac{1}{16}$ OD 304 SS sheath, in lengths from 6 to 24". Each probe terminates with a MTP miniature 3-prong connector (mating connector included).

To Order

Model Number	Lead Style†	Ω at 0°C	Sheath Length**
PR-17-2-100-(*)-6-E	2	100	6"
PR-17-2-100-(*)-9-E	2	100	9"
PR-17-2-100-(*)-12-E	2	100	12"
PR-17-2-100-(*)-18-E	2	100	18"
PR-17-2-100-(*)-24-E	2	100	24"

* Specify $\frac{1}{8}$ or $\frac{1}{16}$ for probe diameter in inches.

** Add additional cost per inch for lengths over 24" ($\frac{1}{16}$ " diameter 24" max).

† 3-wire lead configuration standard, contact sales for other configurations.

Ordering Example: PR-17-2-100-1/8-6-E, quick disconnect PR-17 probe with miniature mating connector, style 2 wiring, 100 Ω @ 0°C, $\frac{1}{8}$ " diameter, 6" long, European curve ($\alpha = 0.00385$).

- ✓ Includes a Precision 100 Ω , Class "A" DIN Platinum Wire Wound RTD Element
- ✓ Easily Connect to Your Meter or Measurement System via Our Miniature 3-Prong MTP Connector and Extension Cords or Cables
- ✓ Available in 1.5 and 3 mm ($\frac{1}{16}$ and $\frac{1}{8}$ ") Diameters
- ✓ Temperature Range is -200 to 500°C (220°C Max at Connector)

Metric Dimension PR-17 Series Miniature Quick Disconnect Probes

General purpose probes with a 1.5 and 3 mm OD 304 SS sheath, in lengths from 150 to 600 mm. Each probe terminates with a MTP miniature 3-prong connector (mating connector included).

Model Number	Lead Style†	Ω at 0°C	Sheath Length**
PR-17-2-100-(*)-150-E	2	100	150 mm
PR-17-2-100-(*)-225-E	2	100	225 mm
PR-17-2-100-(*)-300-E	2	100	300 mm
PR-17-2-100-(*)-450-E	2	100	450 mm
PR-17-2-100-(*)-600-E	2	100	600 mm

* Specify "M15" for 1.5 mm or "M30" for 3 mm probe dimensions.

** Add additional cost per 25 mm for lengths over 600 mm (1.5 mm diameter 600 mm max).

† 3-wire lead configuration standard, contact sales for other configurations.

Ordering Example: PR-17-2-100-M30-150-E, quick disconnect PR-17 probe with miniature mating connector, style 2 wiring, 100 Ω @ 0°C, 3 mm diameter, 150 mm long, European curve ($\alpha = 0.00385$).

Options



OM-CP-RTDTEMP101 precision data logger.



SSLK fitting.



TECU10-MTP extension cable.