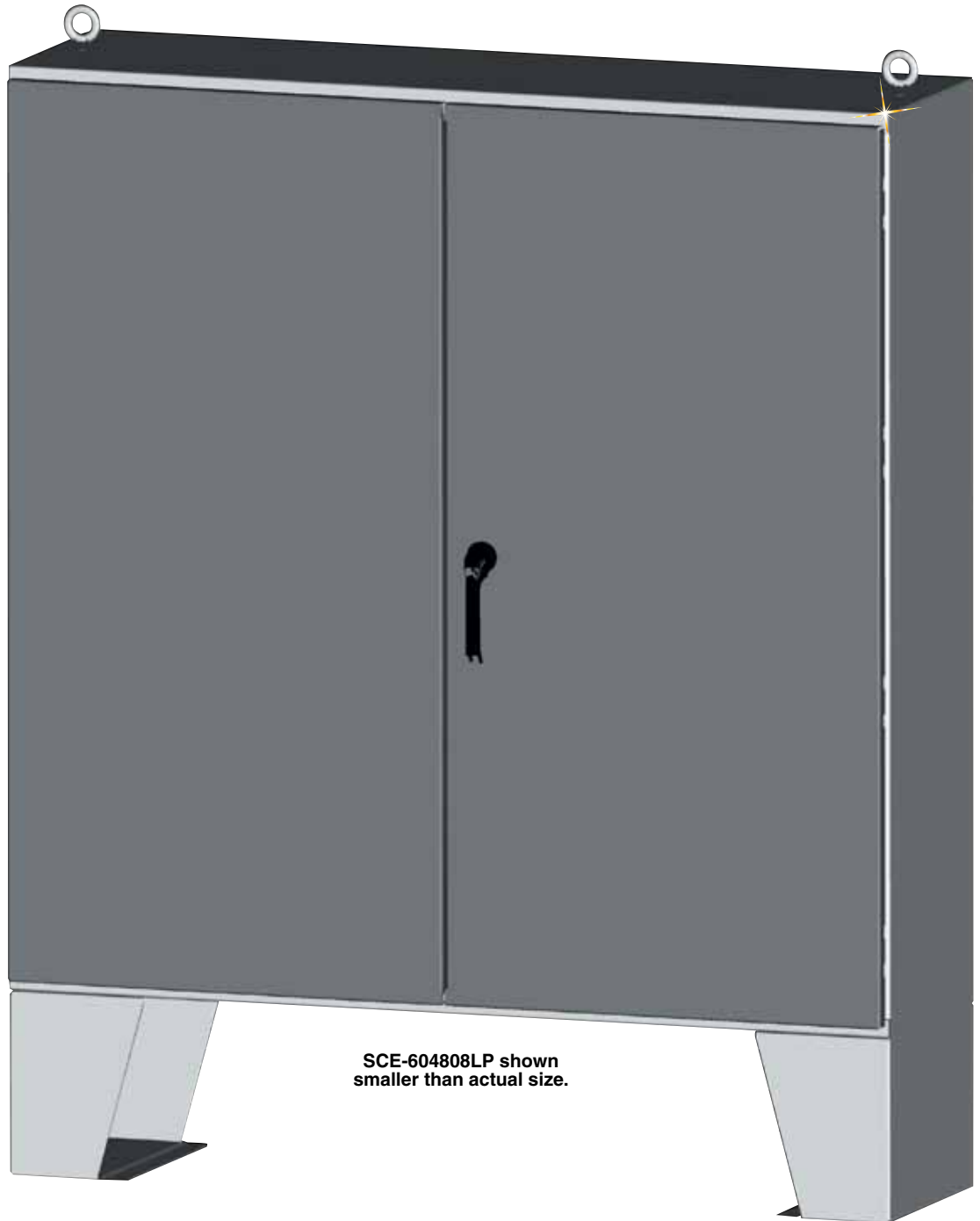


NEMA TYPE 3R AND 12 TWO-DOOR ENCLOSURES

*SCE Two-Door
Series*



SCE-604808LP shown
smaller than actual size.

- 0.104" Carbon Steel
- Seams Continuously Welded and Ground Smooth, No Holes or Knockouts
- Strong, Rigid Construction with Body Stiffeners
- Gasketed Overlapping Doors Eliminate Need for Center Post
- Black Zinc Die Cast Keylocking/ Padlocking Handle
- 3-Point Latching Mechanism
- Latch Rods Have Rollers for Easier Door Closing
- Concealed Hinge
- Removable Print Pocket
- 12" Removable Floor Stands
- Heavy Duty Lifting Eyes
- Panel Supports
- Oil Resistant Door Gasket
- Collar Studs for Mounting Optional Panel
- Ground Stud on Door

Application

Designed to house electrical and electronic controls, instruments and components.
Provides protection from dust, oil and water.

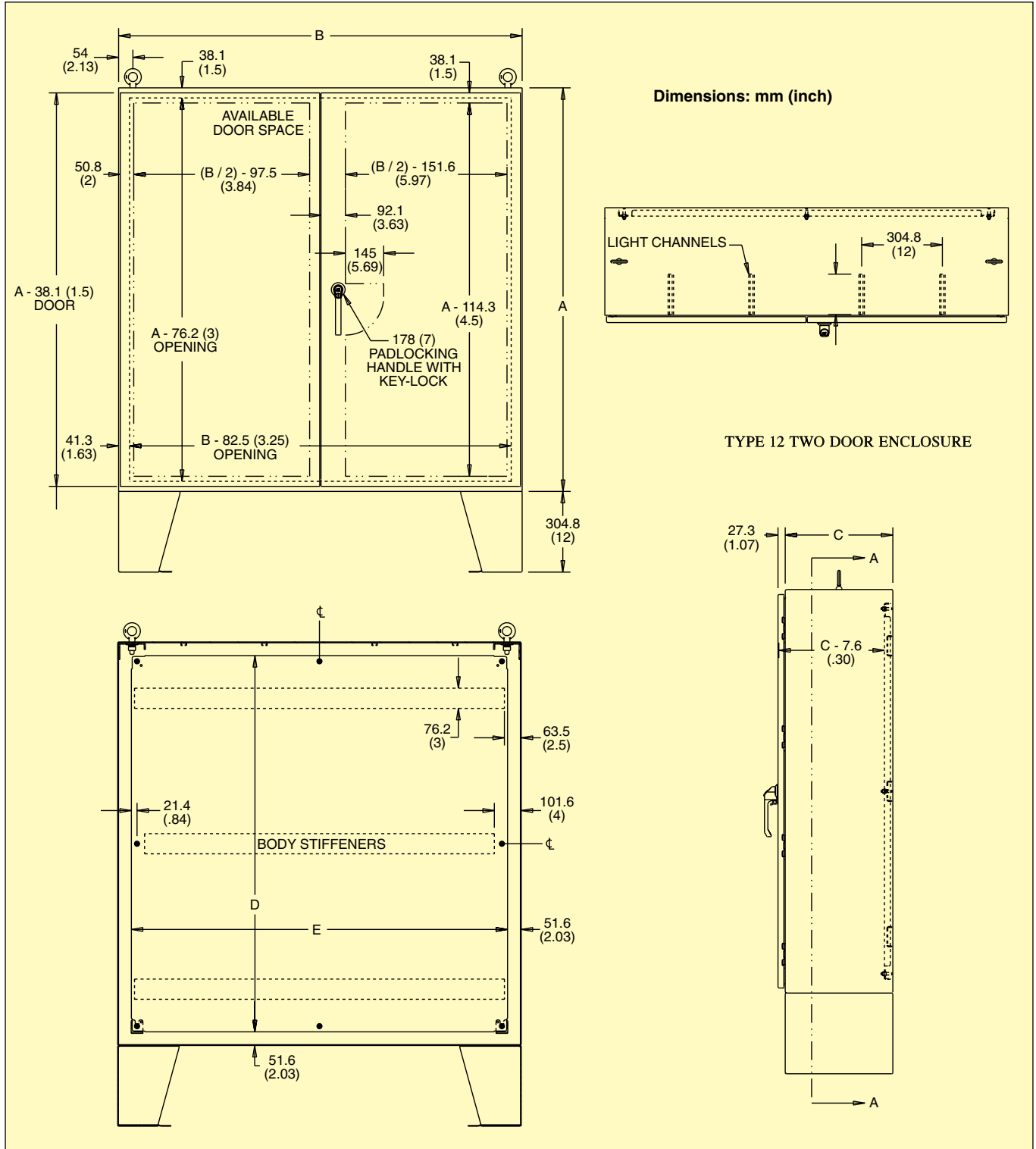
Finish

ANSI-61 recoatable gray finish over phosphatized surfaces. Optional panels are powder coated white.

Industry Standard IS3

NEMA Type 3R, 12 and Type 13
UL Listed Type 3R and 12
CSA Type 3R and 12
IEC 60529 IP 55

Note: Drip shield required for 3R rating.





SCE-604808LP
shown smaller
than actual size.

To Order						
ENCLOSURES (inch)				SUB-PANEL (inch)		
MODEL NO.	HEIGHT (A)	WIDTH (B)	DEPTH (C)	MODEL NO.	HEIGHT (D)	WIDTH (E)
SCE-604808LP	60.00	48.00	8.00	SCE-60P48	56.00	44.00
SCE-604810LP	60.00	48.00	10.00	SCE-60P48	56.00	44.00
SCE-604812LP	60.00	48.00	12.00	SCE-60P48	56.00	44.00
SCE-604816LP	60.00	48.00	16.00	SCE-60P48	56.00	44.00
SCE-604824LP	60.00	48.00	24.00	SCE-60P48	56.00	44.00
SCE-606010LP	60.00	60.00	10.00	SCE-60P60	56.00	56.00
SCE-606012LP	60.00	60.00	12.00	SCE-60P60	56.00	56.00
SCE-606016LP	60.00	60.00	16.00	SCE-60P60	56.00	56.00
SCE-606024LP	60.00	60.00	24.00	SCE-60P60	56.00	56.00
SCE-726010ULP	72.00	60.00	10.00	SCE-72P60	68.00	56.00
SCE-726012ULP	72.00	60.00	12.00	SCE-72P60	68.00	56.00
SCE-726016ULP	72.00	60.00	16.00	SCE-72P60	68.00	56.00
SCE-726024ULP	72.00	60.00	24.00	SCE-72P60	68.00	56.00
SCE-727210ULP	72.00	72.00	10.00	SCE-72P72	68.00	68.00
SCE-727212ULP	72.00	72.00	12.00	SCE-72P72	68.00	68.00
SCE-727216ULP	72.00	72.00	16.00	SCE-72P72	68.00	68.00
SCE-727224ULP	72.00	72.00	24.00	SCE-72P72	68.00	68.00
DRIP SHIELDS*						
SCE-DS48N4	Drip shield for 48" wide outdoor enclosure					
SCE-DS60N4	Drip shield for 60" wide outdoor enclosure					
SCE-DS72N4	Drip shield for 72" wide outdoor enclosure					

* Drip shield required to meet NEMA 3R ratings.

Ordering Examples: SCE-604808LP Type 12 carbon steel two-door enclosure.

SCE-604816LP, Type 12 two-door enclosure, 60 H x 48 W x 16" D, SCE-60P48, sub-panel.