

SOCKET EXTENSION ROTARY TORQUE SENSORS WITH 1/4", 3/8", AND 1/2" DRIVES



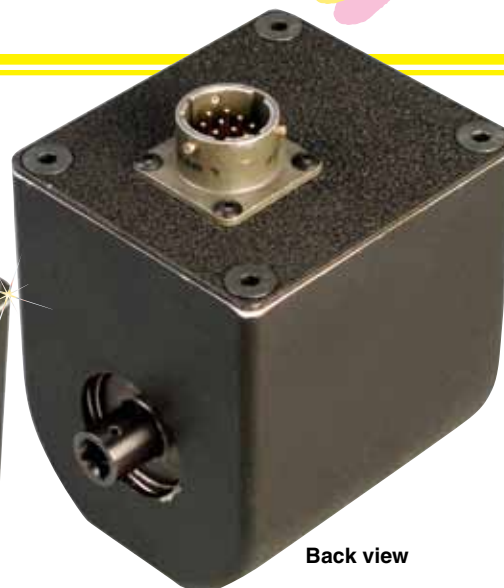
TQ502A Series



TQ502A-600, shown
smaller than actual size.



Front view



Back view

- ✓ Ideal for Use with Production Fastening Applications
- ✓ Bi-directional Measurement
- ✓ Ideal for Use with Drive/Socket Systems
- ✓ Used for Static or Dynamic Torque Measurement

SPECIFICATIONS

Rated Output: 1.5 to 3 mV/V nominal (calibration sheet provided)

Excitation: 20 Vdc maximum

Linearity: ±0.10% FS

Hysteresis: ±0.10% FS

Repeatability: ±0.1% FS

Zero Balance: ±1.0% FS

Operating Temp Range: -55 to 120°C (-65 to 250°F)

Compensated Temp Range: 21 to 75°C (70 to 167°F)

Thermal Effects:

Zero: ±0.002% FS/°F

Span: ±0.002% rdg/°F

Overload Capacity: 150% FS

Bridge Resistance: 1000 Ω

Maximum rpm: 5000

Construction:

Sensor: Alloy steel

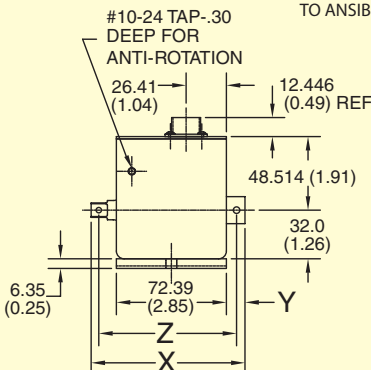
Housing: Alloy aluminum

Electrical: Mating connector supplied

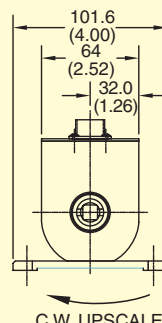
OPTIONS

ORDER SUFFIX	DESCRIPTION
-MB	Mounting foot
-EN1024	1024 ppr angle encoder

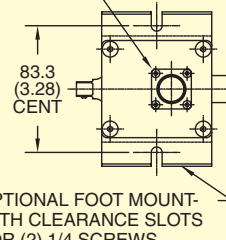
Dimensions: mm (inch)



SQUARE DRIVING & PINDAL ENDS ADHERE TO ANSIB107.4-1982



PT02E-12-10P CONNECTOR
MATING CONNECTOR SUPPLIED



Dimensions: mm (inch)

X	Y	Z
95 (3.75)	9.7 (0.38)	89 (3.5)
95 (3.75)	9.7 (0.38)	89 (3.5)
101 (3.97)	12 (0.48)	91 (3.6)
101 (3.97)	12 (0.48)	91 (3.6)
108 (4.26)	15 (0.58)	94 (3.7)
108 (4.26)	15 (0.58)	94 (3.7)

To Order

MODEL NO.	CAPACITY			DRIVE (SQUARE)	OUTPUT	COMPATIBLE METERS*
	in lb	ft lb	NM			
TQ502A-50	50	4	6	1/4"	2.0 mV/V	DP41-S, DP25B-S, MDS-41S
TQ502A-125	125	10	14	1/4"	2.0 mV/V	DP41-S, DP25B-S, MDS-41S
TQ502A-200	200	16	23	3/8"	1.5 mV/V	DP41-S, DP25B-S, MDS-41S
TQ502A-600	600	50	68	3/8"	3.0 mV/V	DP41-S, DP25B-S, MDS-41S
TQ502A-1.5K	1500	125	170	1/2"	3.0 mV/V	DP41-S, DP25B-S, MDS-41S
TQ502A-2.4K	2400	200	271	1/2"	3.0 mV/V	DP41-S, DP25B-S, MDS-41S