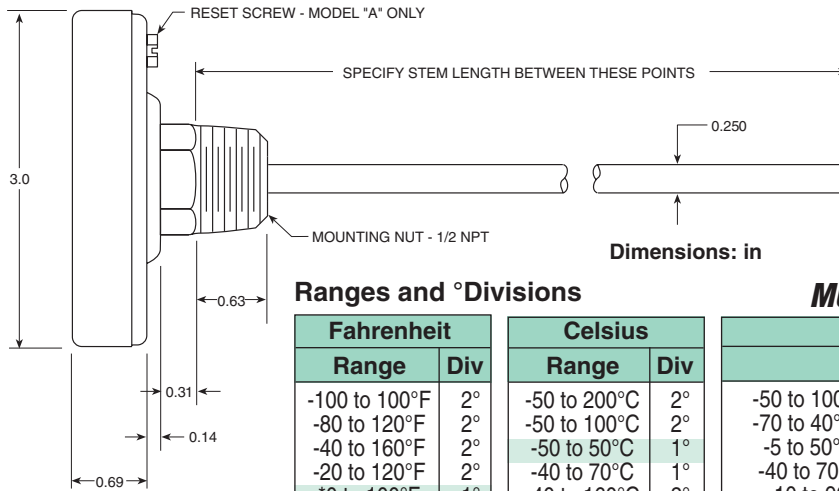


# Models A and R

**Model A and R**  
**\$52**  
 With 6" Stem



All of Stainless Steel (except dial). Hermetically sealed. Model A has external pointer reset.



Shown smaller than actual size.

Dimensions: in

**MOST POPULAR MODELS HIGHLIGHTED!**

To order A and R, specify\*:  
**Model - Range - Stem Length - Mounting**  
*Ordering Examples: A-0-250F-9-1/2, model A with 0 to 250°F range, 9" stem and 1/2 NPT bushing, \$55.*  
**A-0-140F-21/2-1/2**, model A with 0 to 140°F range, 2 1/2" stem and 1/2 NPT mounting, \$52.  
**R-50-400F-21/2-1/2**, model R with 50 to 400°F range, 2 1/2" stem and 1/2 NPT mounting, \$52.

\* For stem lengths, pricing, see page E-12.

## Ranges and °Divisions

Fahrenheit		Celsius		Dual Range	
Range	Div	Range	Div	°C (°F)	Div
-100 to 100°F	2°	-50 to 200°C	2°	-50 to 100°C (-50 to 210°F)	5°/2°
-80 to 120°F	2°	-50 to 100°C	2°	-70 to 40°C (-100 to 100°F)	2°/1°
-40 to 160°F	2°	-50 to 50°C	1°	-5 to 50°C (*25 to 125°F)	1°/1°
-20 to 120°F	2°	-40 to 70°C	1°	-40 to 70°C (-40 to 160°F)	2°/1°
*0 to 100°F	1°	-40 to 160°C	2°	-10 to 90°C (0 to 200°F)	2°/1°
0 to 140°F	2°	*-30 to 30°C	1°	-20 to 120°C (0 to 250°F)	2°/2°
*25 to 125°F	1°	-20 to 120°C	2°	10 to 150°C (50 to 300°F)	2°/2°
0 to 150°F	1°	-10 to 110°C	1°	10 to 260°C (50 to 500°F)	5°/5°
0 to 200°F	2°	*0 to 50°C	1/2°	10 to 290°C (50 to 550°F)	5°/5°
0 to 220°F	2°	0 to 100°C	1°	70 to 400°C (150 to 750°F)	10°/5°
0 to 250°F	2°	0 to 150°C	1°	100 to 500°C (200 to 1000°F)	10°/5°
0 to 300°F	2°	0 to 200°C	2°	-20 to 70°C (0 to 150°F)	10°/5°
20 to 240°F	2°	0 to 300°C	2°	-10 to 115°C (20 to 240°F)	10°/5°
-50 to 300°F	5°	0 to 400°C	5°	10 to 200°C (50 to 400°F)	10°/5°
50 to 300°F	2°	100 to 500°C	5°	100 to 500°C (200 to 1000°F)	10°/5°
50 to 400°F	5°	-80 to 220°C	5°		
50 to 500°F	5°	*0 to 60°C	5°		
50 to 550°F	5°	0 to 250°C	5°		
50 to 750°F	10°	100 to 550°C	5°		
100 to 800°F	10°				
150 to 750°F	10°				
200 to 1000°F	10°				
250 to 600°F	10°				
-100 to 200°F	10°				
-70 to 150°F	10°				

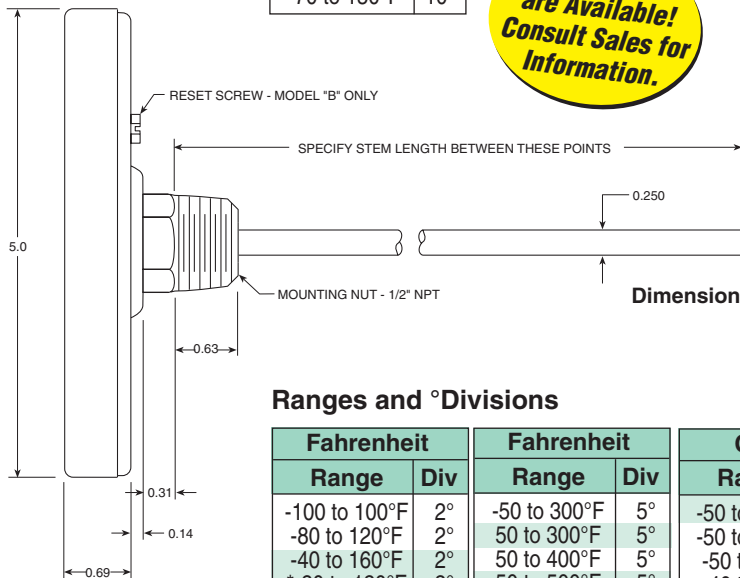
\* Minimum stem length 4".

# Models B and S

**Model S**  
**\$75**  
 With 6" Stem



All of Stainless Steel (except dial). Hermetically sealed. Model B has external pointer reset.



Shown smaller than actual size.

Dimensions: in

**MOST POPULAR MODELS HIGHLIGHTED!**

To order B and S, specify\*:  
**Model - Range - Stem Length - Mounting**  
*Ordering Examples: B-50-300F-9-1/2, model B with 50 to 300°F range, 9" stem and 1/2 NPT bushing, \$81.*  
**B-0-200C-21/2-1/4**, model B with 0 to 200°C range, 2 1/2" stem and 1/4 NPT mounting, \$81.  
**S-25-125F-4-1/2**, model S with 25 to 125°F range, 4" stem and 1/2 NPT mounting, \$75.

\* For stem lengths, pricing, see page E-12.

## Ranges and °Divisions

Fahrenheit		Fahrenheit		Celsius		Celsius	
Range	Div	Range	Div	Range	Div	Range	Div
-100 to 100°F	2°	-50 to 300°F	5°	-50 to 200°C	1°	0 to 200°C	2°
-80 to 120°F	2°	50 to 300°F	5°	-50 to 100°C	1°	0 to 300°C	5°
-40 to 160°F	2°	50 to 400°F	5°	-50 to 50°C	1°	0 to 400°C	5°
*-20 to 120°F	2°	50 to 500°F	5°	-40 to 70°C	1°	100 to 500°C	5°
*0 to 100°F	2°	50 to 550°F	5°	-40 to 160°C	1°	-80 to 220°C	5°
0 to 140°F	2°	50 to 750°F	5°	*-30 to 30°C	1°	-20 to 220°C	5°
*25 to 125°F	5°	100 to 800°F	10°	-20 to 120°C	1°	*0 to 30°C	5°
0 to 150°F	2°	150 to 750°F	10°	-10 to 110°C	1°	*0 to 60°C	5°
0 to 200°F	2°	200 to 1000°F	10°	*0 to 50°C	1°	0 to 250°C	5°
0 to 220°F	5°	-100 to 200°F	10°	0 to 100°C	1°	50 to 450°C	5°
0 to 250°F	5°	-70 to 150°F	10°	0 to 150°C	2°	100 to 550°C	5°
0 to 300°F	5°	200 to 300°F	10°				
20 to 240°F	5°	300 to 400°F	10°				

\* Minimum stem length 4".



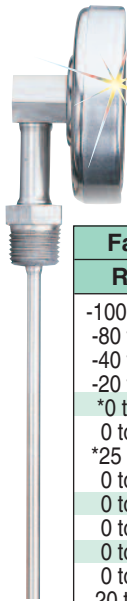
**Dual Ranges are Available! Consult Sales for Information.**

# Models X, XR, V and VR

Heads: X, XR: 3" O.D.  
V, VR: 5" O.D.

Normally supplied with 1/2" NPT Mounting;  
1/4" NPT or 3/4" NPT Thread Optional.  
Made Entirely of Stainless Steel,  
Hermetically Sealed.

X, XR, V and VR  
Ranges and °Divisions



Fahrenheit		Celsius	
Range	Div	Range	Div
-100 to 100°F	2°	-50 to 200°C	2°
-80 to 120°F	2°	-50 to 100°C	2°
-40 to 160°F	2°	-50 to 50°C	1°
-20 to 120°F	2°	-40 to 70°C	1°
0 to 100°F	1°	-40 to 160°C	2°
0 to 140°F	2°	*-30 to 30°C	1°
*25 to 125°F	1°	-20 to 120°C	2°
0 to 150°F	1°	-10 to 110°C	1°
0 to 200°F	2°	*0 to 50°C	1/2°
0 to 220°F	2°	0 to 100°C	1°
0 to 250°F	2°	0 to 150°C	1°
0 to 300°F	2°	0 to 200°C	2°
20 to 240°F	2°	0 to 300°C	2°
-50 to 300°F	5°	0 to 400°C	5°
50 to 300°F	2°	100 to 500°C	5°
50 to 400°F	5°	-80 to 220°C	5°
50 to 500°F	5°	†-20 to 220°C	5°
50 to 550°F	5°	*0 to 30°C	5°
50 to 750°F	10°	*0 to 60°C	5°
100 to 800°F	10°	0 to 250°C	5°
150 to 750°F	10°	†50 to 450°C	5°
200 to 1000°F	10°	100 to 550°C	5°
**250 to 600°F	10°		
-100 to 200°F	10°		
-70 to 150°F	10°		
†200 to 300°F	10°		
†300 to 400°F	10°		

Fahrenheit		Celsius	
Range	Div	Range	Div
-100 to 100°F	2°	-50 to 200°C	2°
-80 to 120°F	2°	-50 to 100°C	2°
-40 to 160°F	2°	-50 to 50°C	1°
-20 to 120°F	2°	-40 to 70°C	1°
0 to 100°F	1°	-40 to 160°C	2°
0 to 140°F	2°	*-30 to 30°C	1°
*25 to 125°F	1°	-20 to 120°C	2°
0 to 150°F	1°	-10 to 110°C	1°
0 to 200°F	2°	*0 to 50°C	1/2°
0 to 220°F	2°	0 to 100°C	1°
0 to 250°F	2°	0 to 150°C	1°
0 to 300°F	2°	0 to 200°C	2°
20 to 240°F	2°	0 to 300°C	2°
-50 to 300°F	5°	0 to 400°C	5°
50 to 300°F	2°	100 to 500°C	5°
50 to 400°F	5°	-80 to 220°C	5°
50 to 500°F	5°	†-20 to 220°C	5°
50 to 550°F	5°	*0 to 30°C	5°
50 to 750°F	10°	*0 to 60°C	5°
100 to 800°F	10°	0 to 250°C	5°
150 to 750°F	10°	†50 to 450°C	5°
200 to 1000°F	10°	100 to 550°C	5°
**250 to 600°F	10°		
-100 to 200°F	10°		
-70 to 150°F	10°		
†200 to 300°F	10°		
†300 to 400°F	10°		

Dual Range			
°F	Div.	°C	Div
-50 to 210°F	5°	-50 to 100°C	2°
-100 to 100°F	2°	-70 to 40°C	1°
*25 to 125°F	1°	-5 to 50°C	1°
-40 to 160°F	2°	-40 to 70°C	1°
0 to 200°F	2°	-10 to 90°C	1°
0 to 250°F	2°	-20 to 120°C	2°
50 to 300°F	2°	10 to 150°C	2°
50 to 500°F	5°	10 to 260°C	5°
50 to 550°F	5°	10 to 290°C	5°
150 to 750°F	10°	70 to 400°C	5°
200 to 1000°F	10°	100 to 500°C	5°
0 to 150°F	10°	-20 to 70°C	5°
20 to 240°F	10°	-10 to 115°C	5°
50 to 400°F	10°	10 to 200°C	5°
**200 to 1000°F	10°	100 to 550°C	5°

\* Minimum stem length 4".  
\*\* Range available in X and XR models only.  
† Range available in V and VR models only.

Model VR With  
Reset Screw  
**\$116**  
With 6" Stem



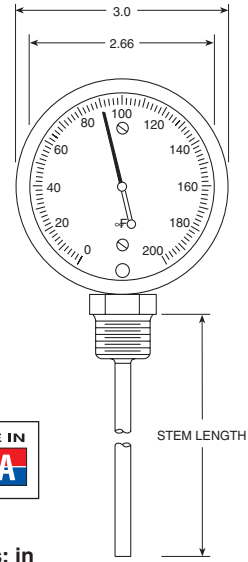
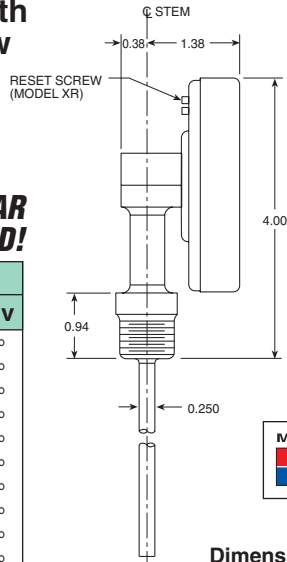
Thermometers of this design are well adapted to installation on top of tanks, boilers, in high locations or other areas where it would be difficult to read a standard angle-form instrument.

Stems are 1/4" in diameter. Stem lengths up to 36" can be supplied.

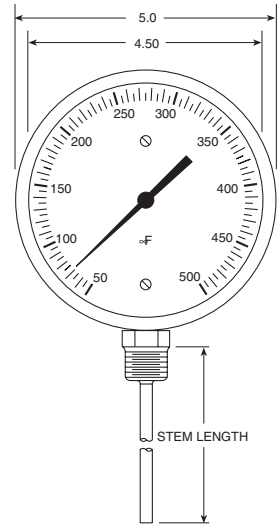
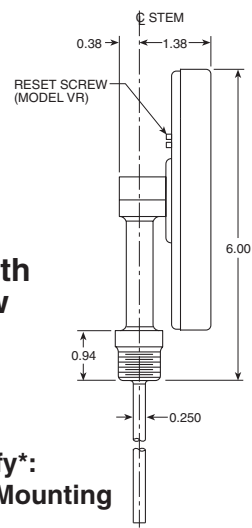
Normally supplied with the stem at the BOTTOM (6 o'clock) position, to order special positions add the bolded suffix. These thermometers can be set with the stem protruding at: **"-LEFT"** (9 o'clock), **"-TOP"** (12 o'clock) or **"-RIGHT"** (3 o'clock) positions. If not specified, the standard BOTTOM (6 o'clock) position will be supplied.

J-SF, shown smaller than actual size.

Model XR With  
Reset Screw  
**\$86**  
With 6" Stem



Dimensions: in



To order X, XR, V and VR, specify\*:  
Model - Range - Stem Length - Mounting  
Ordering Examples: XR-0-100F-6-1/2,  
model XR with 0 to 100°F range, 6" stem  
and 1/2" NPT bushing, \$86.

XR-0-150C-4-1/2, model XR with 0 to 150°C range, 4" stem and 1/2" NPT mounting, \$86.  
X-0-100F-4-1/2, model X with 0 to 100°F range, 4" stem and 1/2" NPT mounting, \$86.

\* For stem lengths, pricing, see page E-12.

## Silicone-Filled Thermometers

Silicone-filled thermometers are offered for severe industrial applications, where vibration is a problem. Silicone dampening prolongs instrument life by preventing wear and fatigue in the instrument's internal parts. The silicone also improves readability by reducing pointer flutter, and promotes faster temperature response.

Any Pro/Temp 3" or 5" dial bi-metal thermometer can be silicone filled, in any stem length, and any temperature range up to 500°F. (Silicone filling with ranges over 500°F is not recommended.) All silicone-filled thermometers come with a durable polycarbonate crystal. Also available with Models G and H.

To order Silicon-Filled, specify:  
the thermometer per its ordering example and  
add suffix **"-SF"** to model number.

See accessories and options on page E-12 for pricing.

