



Application

The sanitary and cost-efficient design of the Trodeks PRO centrifugal pump makes it particularly suitable as main process pump in the dairy, beverage, pharmaceutical and cosmetic industries.

Design and features

Trodeks PRO is a range of close-coupled centrifugal pumps with sanitary design, compact and efficient. It is made of a cold-formed stainless steel casing, stainless steel open impeller (investment casting), mechanical seal, pump cover, lantern and shaft, connected to the motor shaft by mechanical compression.

The motor complies with the IEC standards, it is protected with a stainless steel shroud and provided with the height adjustable hygienic designed legs.

Technical specifications

Materials:

Parts in contact with the product	Stainless steel AISI 316L (1.4404)
Other steel parts	Stainless steel AISI 304 (1.4301)
Gaskets in contact with the product	EPDM

Single internal mechanical seal EN 12756 I1k:

Rotary part	C
Stationary part	SiC
Gaskets	EPDM

Surface finish:

External	Bright polish
Internal	$Ra < 0,8 \mu m$

Connections:

DIN 11851
CLAMP
SMS
(other connections available on request)

Trodeks PRO centrifugal pump without shroud



Technical specifications*Operating limits:*

Nominal pressure	10 bar	145 PSI
Temperature range	-10°C to +120 °C	14 °F to 248 °F
	+140°C (SIP, max- 30 min.)	284 °F
Maximum flow	130 m³/h	572 US GPM
Maximum differential head	90 m	295 ft
Maximum speed	3500 rpm	

**Motor**

Triphasic induction motor with B34 flange (B35 for motor frame 132 and above), in compliance with the IEC standards, 2 poles = 3000/3600 rpm, IE-2 efficiency class, IP 55 protection and F-class insulation.

3 phases, 50 Hz, 220-240 V Δ / 380-420 V Y, ≤ 4 kW

3 phases, 50 Hz 380-420 V Δ / 660-690 V Y, ≥ 5,5 kW

Options

Jacketed pump housing.

Two shaft sealing

Drain port.

Distintos tipos de conexiones.

SiC/SiC mechanical seal.

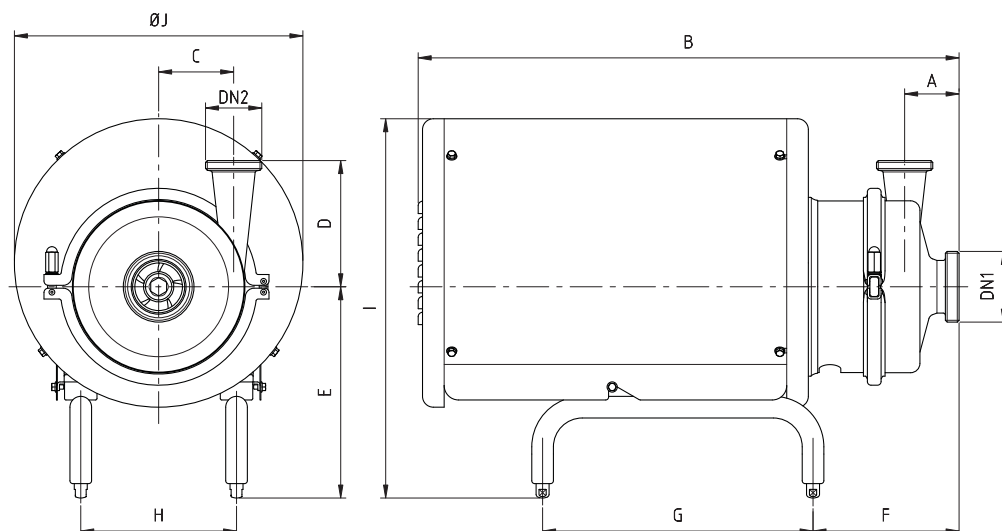
Gaskets: FPM and PTFE.

Motor with other voltages, frequencies, protection classes and efficiencies.

Trolley and/or control panel.

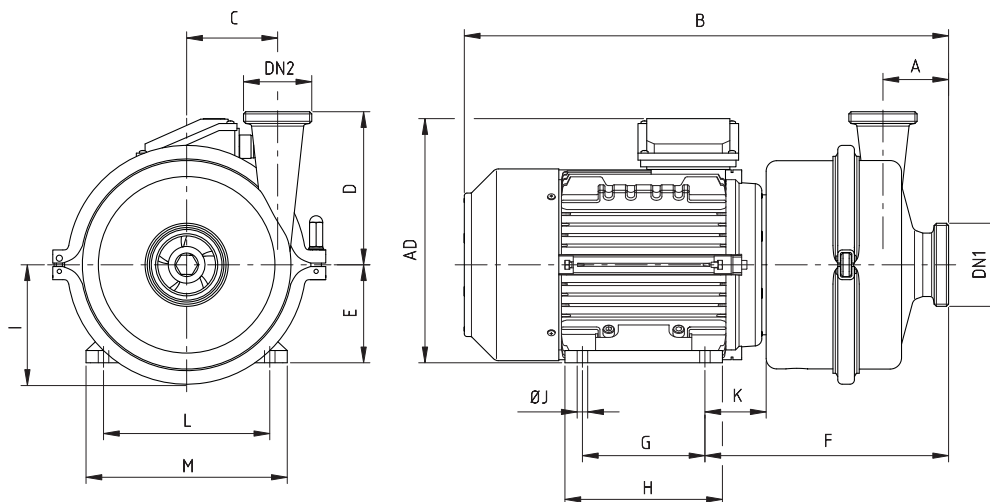
ATEX certification (Category 2).



Dimensions: Trodeks PRO

Pump	Motor		kW	RPM	DN1	DN2	A	B	C	D	E	F	G	L	I	ØJ	kg
SE-15	A	71	0,25	1450	40 1 ½"	32 1 ½"	55	440	55	100	203	111	250	112	347	230	14
			0,37	2950				440			203	111	250	112	347	230	14
			0,55	440				203			111	250	112	347	230	15	
SE-20	C	90S	1,1	1450	50 2"	40 1½"	55	528	74	140	227	154	275	132,5	411	290	28
			1,5	2950				528			227	154	275	132,5	411	290	27
		90L	2,2	528				227			154	275	132,5	411	290	30	
SE-26	C	90S	1,1	1450	65 3"	50 2"	55	536	72	150	227	162	275	132,5	411	290	29
	D	100	3	2950				610			266	159	325	175	481	350	44
	E	112	4					610			278	166	325	175	493	350	47
			5,5					610			278	166	325	175	493	350	50
SE-28	C	90S	1,1	1450	40 1½"	40 1½"	65	531	107	165	227	157	275	132,5	411	290	34
			1,5	2950				531			227	157	275	132,5	411	290	33
		90L	2,2					531			227	157	275	132,5	411	290	36
	D	100	3					606			266	154,5	325	175	481	350	49
	E	112	4					606			278	161	325	175	493	350	52
			5,5					606			278	161	325	175	493	350	55
								606			278	161	325	175	493	350	55
SE-35	C	90L	1,5	1450	65 3"	50 2"	75	545	104	175	227	171	275	132,5	411	290	38
	D	100	2,2					2950			620	266	168	325	175	481	350
	E	112	5,5	620							278	175	325	175	493	350	56
	F	132S	7,5	750							293	202	375	216	526	400	87
SE-36	C	90L	1,5	1450	100 4"	65 3"	75	546	98	181,5	227	172,5	275	132,5	411	290	41
	D	100	2,2					620			266	168,5	325	175	481	350	50
			3					620			266	168,5	325	175	481	350	53
			E					112			4	620	278	175,5	325	175	493
	F	132S	7,5	2950				750			293	202,5	375	216	526	400	90

Dimensions with DIN 11851 connections

Dimensions: Trodeks PRO without shroud

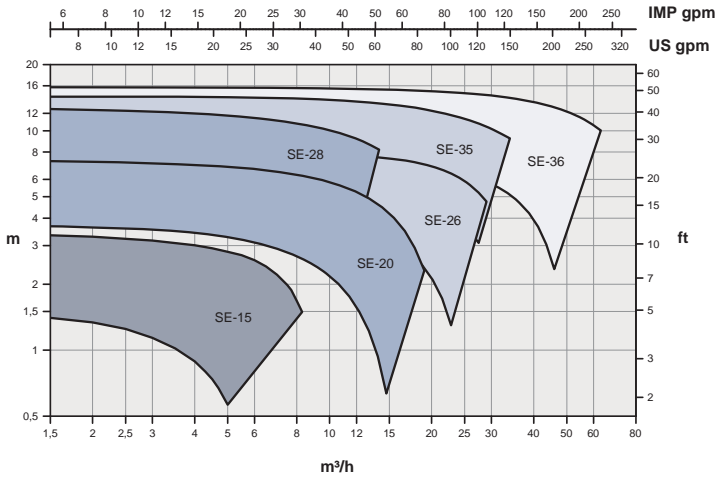
Pump	Motor		kW	RPM	DN1	DN2	A	B	C	D	E	F	G	H	HD	I	ØJ	K	L	M	kg			
SE-15	A	71	0,25	1450	40 1 ½"	32 1 ½"	55	368	55	100	71	201	90	105	190	80	7	45	112	137	10			
			0,37	2950				368			71	201	90	105	190	80	7	45	112	137	10			
			0,55					368			71	201	90	105	190	80	7	45	112	137	11			
SE-20	C	90S	1,1	1450	50 2"	40 1½"	55	457	74	140	90	238	100	130	240	105	10	56	140	175	23			
			1,5	2950				457			90	238	100	130	240	105	10	56	140	175	22			
		90L	2,2					482			90	238	125	155	240	105	10	56	140	175	24			
SE-26	C	90S	1,1	1450	65 3"	50 2"	55	465	72	150	90	246	100	130	240	105	10	56	140	175	23			
	D	100	3					528			100	263	140	180	265	105	12	63	160	200	35			
	E	112	4	2950				545			112	270	140	180	291	105	12	70	190	230	38			
			5,5					112			270	140	180	291	105	12	70	190	230	42				
SE-28	C	90S	1,1	1450	40 1½"	40 1½"	65	460	107	165	90	241	100	125	240	137	10	56	140	175	28			
			1,5					460			90	241	100	125	240	137	10	56	140	175	28			
		90L	2,2					485			90	241	125	155	240	137	10	56	140	175	30			
	D	100	3	2950				523			100	258	140	180	265	137	12	63	160	200	40			
			4					540			112	265	140	180	291	137	12	70	190	230	43			
	E	112	5,5					540			112	265	140	180	291	137	12	70	190	230	47			
SE-35	C	90L	1,5	1450	65 3"	50 2"	75	499	104	175	90	255	125	155	240	137	10	56	140	180	32			
	D	100	2,2					537			100	272	140	180	265	137	12	63	160	200	38			
	E	112	5,5	2950				554			112	279	140	180	291	137	12	70	190	230	48			
	F	132S	7,5					619			132	321	140	180	332	150	12	75	216	255	76			
SE-36	C	90L	1,5	1450	100 4"	65 3"	75	500	98	181,5	90	255	125	155	240	137	10	56	140	180	35			
	D	100	2,2								547	100	272	140	180	265	137	12	63	160	200	41		
			3								547	100	272	140	180	265	137	12	63	160	200	44		
			4					2950			554	112	279	140	180	291	137	12	70	190	233	53		
	E	112	4					554			112	279	140	180	291	137	12	70	190	233	53			
								619			132	321	140	180	332	150	12	75	216	255	79			

Dimensions with DIN 11851 connections

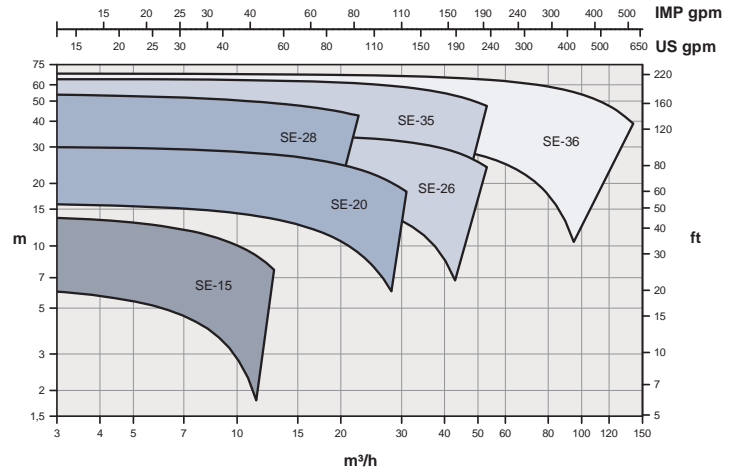
Performance charts

50 Hz

1450 rpm

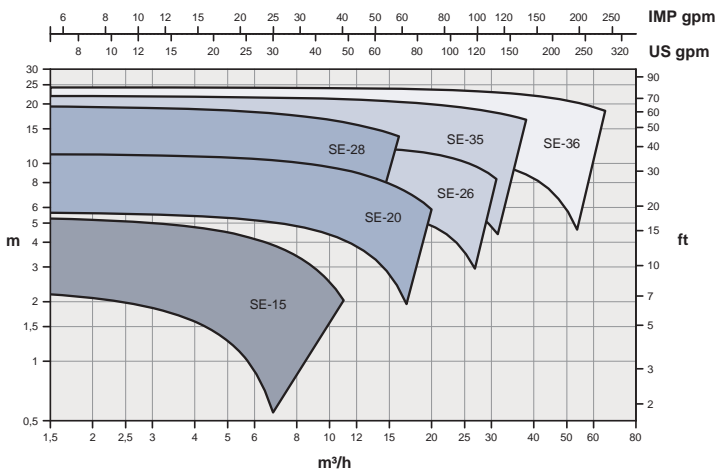


2900 rpm



60 Hz

1750 rpm



3500 rpm

