

LONG-STROKE LINEAR POTENTIOMETERS FOR DISPLACEMENT MEASUREMENT

**150 mm to 1.2 m
(6 to 48") Ranges**



LP801 Series

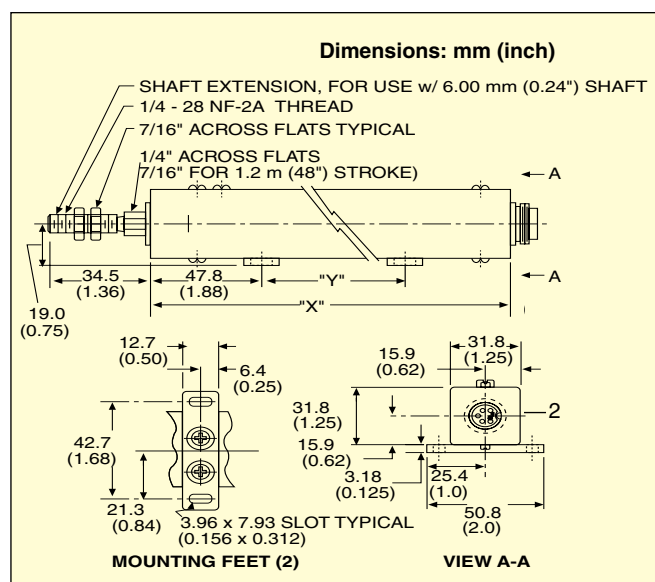
- ✓ **Rugged Construction and Shaft Seals for Protection in Factory Environments**
- ✓ **Precious-Metal Wipers Ensure High Performance and Low Noise**
- ✓ **Plastic Film Element Reduces Wear for Extremely Long Life**

The TRODEX® LP801 Series linear potentiometers can measure linear position or displacement up to 1.2 m (48") in a wide variety of manufacturing and process applications. With their long life, front and rear bearings, anodized extruded aluminum housings, stainless steel shafts, and precious-metal wipers and contacts, these devices are suitable for harsh factory environments. Based on a conductive plastic film element, the LP801 provides high resolution and absolute position measurement without using external signal conditioners.

SPECIFICATIONS

Total Resistance: 5000 $\Omega \pm 20\%$
Linearity: $\pm 1\%$ FS
Hysteresis: ± 0.025 mm (0.001")
Repeatability: ± 0.012 mm (0.0005")

Incremental Sensitivity: 0.0013 mm (0.00005")
Power Rating: 0.75 W/stroke inch
Temp. Range: -65 to 105°C (-85 to 221°F)
Operating Force: 450 g (1 lb) max
Shaft: 6 mm (0.236") diameter with 1/4-28 threaded-end adaptor
Weight: 0.36 to 2.2 kg (0.8 to 4.9 lb)
Life: 100 million operations up to 300 mm (12") stroke—
 derated proportionally for longer units [standard rate of travel
 50 mm/s (2"/s)]



To Order

MODEL NO.	ELECTRICAL TRAVEL		MECHANICAL TRAVEL		"X" DIMENSION (NOMINAL)		"Y" DIMENSION (NOMINAL)		COMPATIBLE METERS
	mm	inch	mm	inch	mm	inch	mm	inch	
LP801-150	152	6.0	155	6.10	233	9.19	127	5.00	DP25B-E, DP41-E
LP801-300	305	12.0	307	12.10	380	15.19	279	11.00	DP25B-E, DP41-E
LP801-450	457	18.0	460	18.12	533	21.19	432	17.00	DP25B-E, DP41-E
LP801-600	610	24.0	613	24.13	685	27.19	584	23.00	DP25B-E, DP41-E
LP801-750	762	30.0	765	30.13	838	33.19	737	29.00	DP25B-E, DP41-E
LP801-900	914	36.0	918	36.13	990	39.19	889	35.00	DP25B-E, DP41-E
LP801-1200	1219	48.0	1224	48.18	1295	51.19	1194	47.00	DP25B-E, DP41-E

Comes complete with operator's manual.

Ordering Example: LP801-150, 152 mm (6") stroke linear potentiometer.