



Compact Infrared Cameras

With On-Board Visual Camera, Wi-Fi Connectivity, P-i-P and Bright LED Light

Now with MSX[®] Advanced Thermal Imaging Camera Performance

OSXL-E Series



- ✓ Superior Thermal Imaging—
Up to 76,800 Pixels (320 x 240)
- ✓ Improved Digital Camera—
3.1 Mega Pixel Resolution
- ✓ Wi-Fi Connectivity
- ✓ Scalable P-i-P and Thermal Fusion
- ✓ Instant Report in PDF Format
- ✓ Long Battery Life (Lasts Over 4 Hours)
- ✓ 8.9 cm (3.5") LCD Color Display
- ✓ Stores More Than 1000 JPEG Images
- ✓ Auto Orientation

Presenting the best performance and value in compact thermal imaging cameras ever. Designed to fit beautifully into your IR inspection program, budget, and the palm of your hand.

OSXL-E series cameras offer superior thermal imaging with up to 76,800 pixels (320 x 240) for better long-range accuracy and the highest level of point and shoot camera IR resolution. A digital camera with 3.1 mega pixel resolution provides clearest visible light pictures in its class and includes bright LED lamp that doubles as a flashlight (2 mega pixel for OSXL-E30 model).

The large landscape touch screen is brighter than other brands; the OSXL-E series touch screen provides an intuitive interface that takes full advantage of the entire 8.9 cm (3.5") display for easy access to on-screen diagnostics tools. Wi-Fi Connectivity can send images and data to an iPhone[®], iPad[®], iPod touch[®], or Android[™] to share images and critical information quickly using FLIR Tools Mobile application.

OSXL-E series has accurate temperature measurements; unit's accuracy calibrated within 2% or $\pm 2^{\circ}\text{C}$ to meet the standard you can always trust FLIR to deliver. Scalable P-i-P (Picture-in-Picture) and thermal fusion with overlay thermal and visible images for easy location identification and clearer documentation. Multiple measurements can be done by adding up to 3 box areas and 3 moveable spots using the touch screen to gather more detailed temperature information.

METERLINK[™] feature will wirelessly transmit vital diagnostic data from clamp and moisture meters directly to the camera for annotating thermal images to further support findings and decisions. Annotation feature with add voice comments via bluetooth[®] headset and text notes from the touch screen keypad. An instant report can be generated in a professional PDF document directly from the camera right on-site (preloaded on OSXL-E60 only).



OSXL-E50 shown smaller than actual size.



Camera kits with PRO software bundle increase the power of the camera data by adding a powerful software for creating compelling and professional, fully customized, easy-to-interpret maintenance reports. Professional Report Wizard guides you step-by-step with instructions combining all IR inspection data, infrared and visual images, temperature measurements, and text notes, into a professional, easy-to-interpret maintenance report.

- 2.0 or 3.1 MP Digital Camera
- LED Lamp
- Laser Pointer

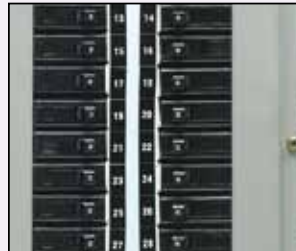




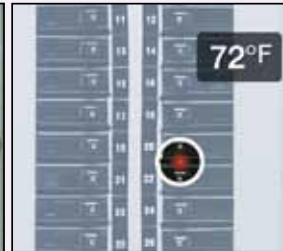
Why Thermal Imaging?

While spot infrared thermometers present only a single temperature at a single spot, these Thermal Imaging Cameras give you the whole picture, equal up to 76,800 spots! (OSXL-E60)

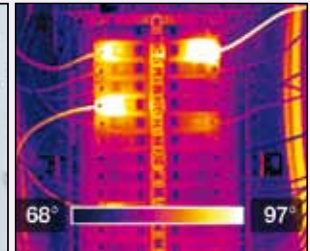
Thermal imaging is the most effective method for finding problems or potential problems in a variety of applications across many fields. If you are new to thermography and need a general purpose thermal imaging camera for troubleshooting, the OSXL-E Series is perfect for you! They are fully loaded with thermal imaging functions at a fraction of the price of a professional grade camera.



What the human eye sees

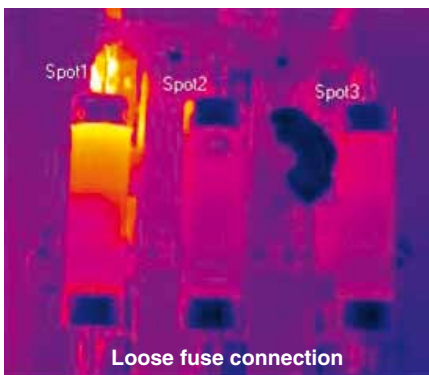


What an infrared thermometer sees



What a thermal imaging camera sees

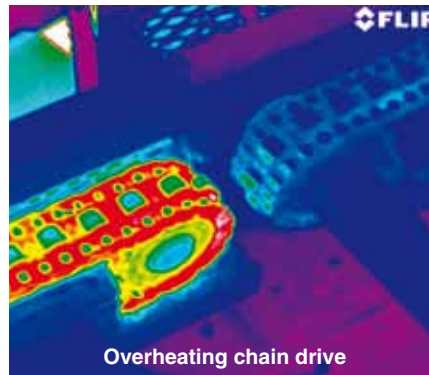
Applications



Loose fuse connection

Electrical

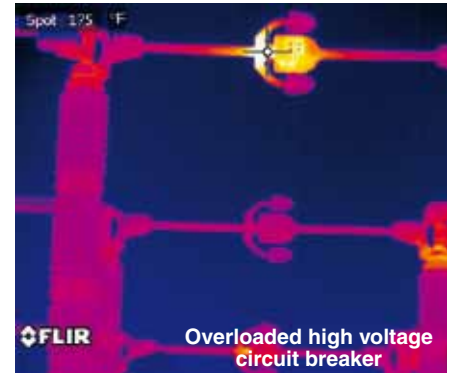
Find hidden problems quickly, make timely repairs, prevent unscheduled shutdowns, and improve plant safety.



Overheating chain drive

Mechanical

Discover overheated bearings, linkages, and other components before they can interrupt your operations or create safety hazards.



Overloaded high voltage circuit breaker

Utility

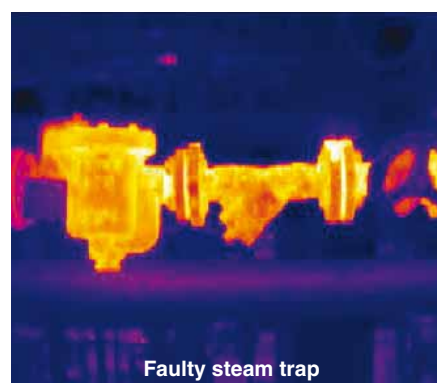
Scan large areas and hundreds of connections quickly and efficiently to prevent unexpected service outages and lost revenues.



Moisture damage evident on floor and wall

Building Diagnostics

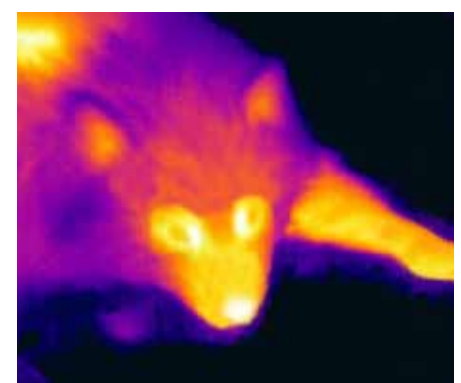
Even small areas of moisture intrusion can be easy to spot with an infrared camera. Locate and repair hidden water damage before a trickle turns into a flood.



Faulty steam trap

Energy Loss

Discover missing insulation, faulty HVAC systems, and other issues that waste energy and lots of money.



Destructive Pests

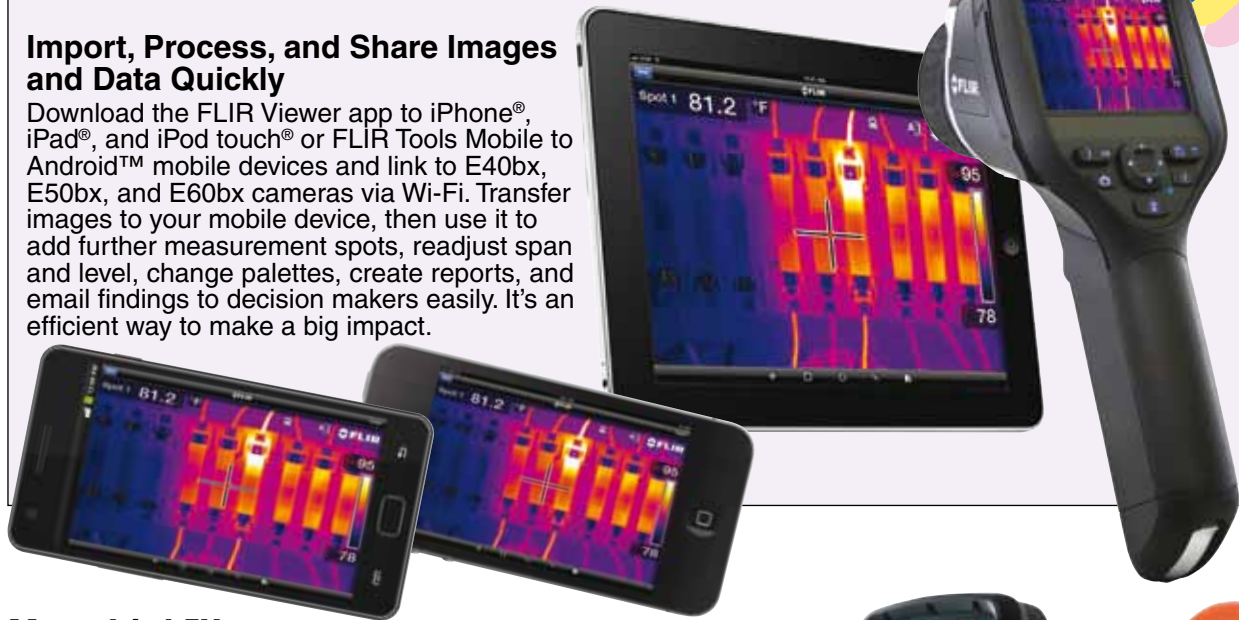
Hunt down burrowing and nesting insects and rodents before they eat customers out of house and home.

OSXL-E Series Thermal Imaging Cameras Feature Wi-Fi Connectivity to Mobile Devices!



Import, Process, and Share Images and Data Quickly

Download the FLIR Viewer app to iPhone®, iPad®, and iPod touch® or FLIR Tools Mobile to Android™ mobile devices and link to E40bx, E50bx, and E60bx cameras via Wi-Fi. Transfer images to your mobile device, then use it to add further measurement spots, readjust span and level, change palettes, create reports, and email findings to decision makers easily. It's an efficient way to make a big impact.



MeterLink™

Measure More than Temperature

Be sure you're getting critical electrical load readings so you make the right call. Quantify the severity of electrical problems with MeterLink-enabled clamp meters that use Bluetooth wireless communication to send data to the FLIR camera for annotation on stored thermal images. Contact FLIR to learn about other tools that connect with MeterLink.



MeterLink Helps Thermographers:

- Quantify Electrical Problems in Reports
- Add Detail to Load Imbalance Diagnostics
- Document Energy-Consumption Data
- Improve Documentation of Moisture Detection

MeterLink is a patented technology only available with compatible FLIR cameras.

InstantReport

Generated Directly from Your Camera

Create professional reports on board your camera with InstantReport. FLIR's analysis software has always offered professional results and been easy to use. Now create reports without a PC!

InstantReport includes thermal and visual images along with your measurement tools and text & sketch annotations in a standard PDF document that's easy to share right from the touchscreen.



Thermogram

building 18 - electrical

Measurements

Spot 1	77.3°C
Area 1 Max	217.7°C
Artmax-Sp1	140.4°C

DC	08.5A
DC	08.5A

Parameters

Emissivity	0.98
Ref temp	20.0°C
Obj dist	1.0m
FOV	25°



FLIR Tools Mobile Communication—Connect an OSXL-E Series camera to smartphones and tablets with our Wi-Fi app. Stream live video so others can watch along. Import radiometric JPEGs, adjust levels, add measurement tools, then send images off in simple reports via email to expedite repair decisions.

Superior Thermal Imaging—Up to 76,800 pixels (320 x 240) for better long-range accuracy and the highest level of point and shoot camera IR resolution.

MSX Thermal Image Enhancement—See numbers, labels and other key visual details not normally apparent in a regular thermal image with an all-in-one thermal picture that instantly orients you to right where heat issues are.

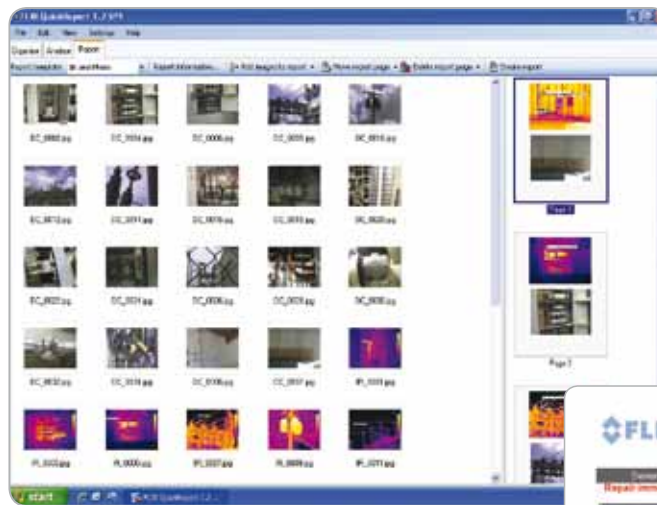
Specifications

Feature	OSXL-E40	OSXL-E50	OSXL-E60
Temperature Range	-20 to 650°C (-4 to 1202°F)	-20 to 650°C (-4 to 1202°F)	-20 to 650°C (-4 to 1202°F)
Thermal Sensitivity (N.E.T.D)	<0.07°C at 30°C	<0.05°C at 30°C	<0.05°C at 30°C
Detector Type—Focal Plane Array; (FPA) Uncooled Microbolometer	160 x 120 pixels	240 x 180 pixels	320 x 240 pixels
Picture-in-Picture (P-i-P)/Fusion	Fixed P-i-P	Scalable P-i-P/ thermal fusion	Scalable P-i-P/ thermal fusion
MPEG 4 Video Recording	Yes	Yes	Yes
Video Camera with Lamp	3.1 MP/bright LED lamp	3.1MP/bright LED lamp	3.1MP/bright LED lamp
Digital Zoom	2X continuous	4X continuous	4X continuous
Image Annotation	Voice (60 s)/ text comments	Voice (60 s)/ text comments	Voice (60 s)/ text comments
Moveable Spot	3 spotmeters	3 spotmeters	3 spotmeters
Area Box	3 area boxes (full image with min/max/avg)	3 area boxes (full image with min/max/avg)	3 area boxes (full image with min/max/avg)
Delta T	Yes	Yes	Yes
Data Communication Interface	USB-mini, USB-A, composite video, bluetooth, Wi-Fi	USB-mini, USB-A, composite video, bluetooth, Wi-Fi	USB-mini, USB-A, composite video, bluetooth, Wi-Fi

Common	
Frame Rate	60 Hz
Field of View/Focus	25° x 19°/manual [minimum focus distance 0.4 m (1.3')]
Spectral Range	7.5 to 13 µm
Display	Built-in 8.9 cm (3.5") color LCD
Image Modes	Thermal, visual, image gallery, and MSX
Image Storage	>1000 radiometric JPEG images (SD card memory)
Laser Classification/Type	Class 2/semiconductor AlGaInP diode laser: 1 mW/635 nm (red)
Set-Up controls	Mode selector, color palettes, configure image info, units, language, date and time formats, and image gallery
Measurement Modes	Auto hot/cold spot, Isotherm (above/below/interval)
Measurement Correction	Reflected ambient temperature and emissivity correction
Battery Type/Operating Time	Li-Ion/>4 hours, display shows battery status
Charging System	In camera AC adaptor/2 bay charging system
Shock/Vibration/Drop/ Encapsulation; Safety	25G, IEC 60068-2-29/ 2G, IEC 60068-2-6/drop-proof 2 m (6.6') IP54; EN/UL/CSA/PSE 60950-1
Dimensions/Weight	246 x 97 x 184 mm (9.7 x 3.8 x 7.2")/825 g (<1.82 lb), including battery



OSXL-E40 shown smaller than actual size.



Reporter Pro Extra Reporting Power for Busy Professional Thermographers

FLIR Reporter PRO equips you with everything you need to customize a distinctive optional look and generate reports as quickly as possible that stand out with greater credibility. Design your templates in Microsoft Word®, drag-and-drop images, and generate multi-page reports automatically. Import all of your measurements, Delta T analysis, or personal formulas – even load your imagery and report data into Excel and PowerPoint!



To Order

Model No.	Description
OSXL-E40	FLIR E40 thermal imaging infrared camera (160 x 120) with MSX
OSXL-E40-KIT	FLIR E40 with MSX and FLIR Tools
OSXL-E50	FLIR E50 thermal imaging infrared camera (240 x 180)
OSXL-E50-KIT	FLIR E50 with MSX and FLIR Tools
OSXL-E60	FLIR E60 thermal imaging infrared camera (320 x 240)
OSXL-E60-KIT	FLIR E60 with MSX and FLIR Tools

Accessories

Model No.	Description
T197752	Spare L-ion rechargeable battery
T910814	Spare AC adaptor charger (110 to 240V, US plug)
1910490	Cigarette lighter adaptor kit, 12 Vdc (1.2 m cable)
T198125	2-bay battery charger including power supply (multi plugs)
OSXL-REPORTER8.5SW	FLIR reporter professional analysis software
OSXL-BUILDIRSW	BuildIR software package
1196961	15° telephoto lens
1196960	45° wide angle lens
T197771	Bluetooth headset
T197926	Tripod adaptor
T127100	Sunshield
T911087	Pouch

Comes complete with memory card with adaptor, li-ion rechargeable battery, power supply, USB cable, video cable, hand strap, camera lens cap, hard carrying case, standard FLIR tools software CD-ROM and full operating manual on disk.

Ordering Example: OSXL-E40, FLIR E40 thermal imaging infrared camera (160 x 120).

Note: Not for export. USA only.