

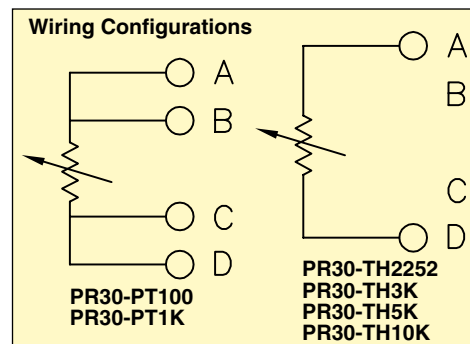
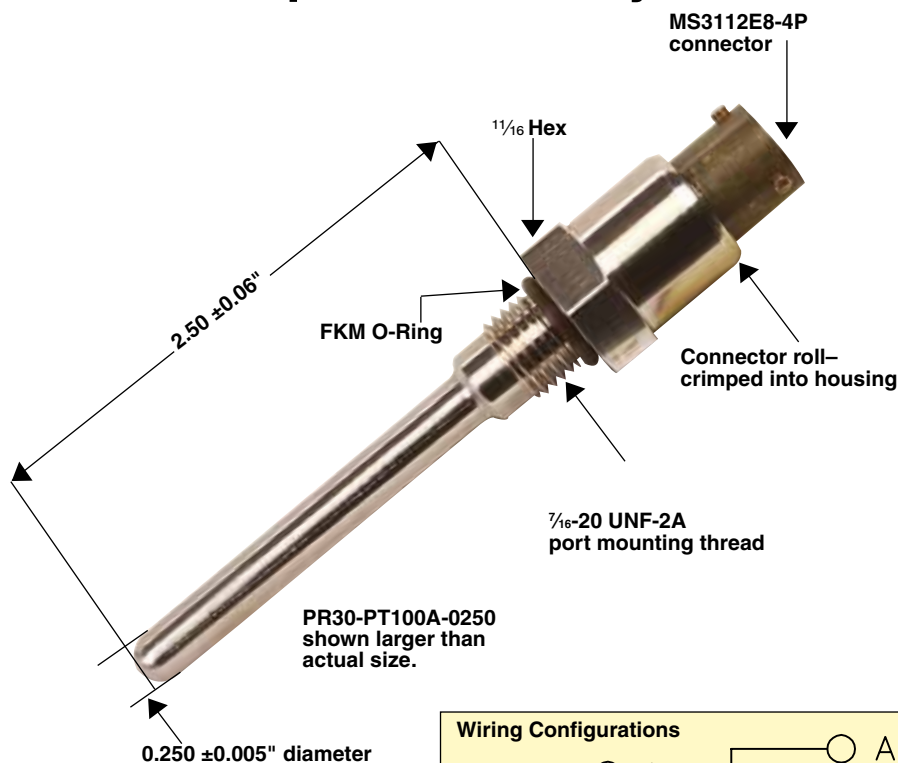


# Temperature Sensors for Oil, Fuel or Other Liquids

Includes Threaded Mounting Port, Non-Hermetic Circular Connector and Multiple Sensor Styles

## PR30 Series

- ✓ Mounts into a Standard  $\frac{7}{16}$ -20 UNF Port
- ✓ All Welded Stainless Steel Construction in Wetted Area
- ✓ MS3112E8-4P Circular Connector Mates With a PT06E8-4S Mating Connector
- ✓ Available in 2 Platinum RTD and 4 Thermistor Output Configurations
- ✓ Temperature Range -50 to 200°C (32 to 212°F)
- ✓ Includes FKM O-Ring at Seal Face



## To Order

Model No.	Sensor Type	Accuracy	Measurement Current
PR-30-PT100A-0250	Pt100 RTD (100 $\Omega$ at 0°C)	IEC Class A $\pm 0.15^\circ\text{C}$ (at 0°C)	1 milliamp max
PR-30-PT1KA-0250	Pt1000 RTD (1000 $\Omega$ at 0°C)	IEC Class A $\pm 0.15^\circ\text{C}$ (at 0°C)	0.5 milliamp max
PR-30-TH2252-0250	2252 $\Omega$ at 25°C thermistor	$\pm 0.2^\circ\text{C}$ (0 to 70°C)	10 to 15 microamps
PR-30-TH3K-0250	3000 $\Omega$ at 25°C thermistor	$\pm 0.2^\circ\text{C}$ (0 to 70°C)	10 to 15 microamps
PR-30-TH5K-0250	5000 $\Omega$ at 25°C thermistor	$\pm 0.2^\circ\text{C}$ (0 to 70°C)	10 to 15 microamps
PR-30-TH10K-0250	10,000 $\Omega$ at 25°C thermistor	$\pm 0.2^\circ\text{C}$ (0 to 70°C)	10 to 15 microamps
<b>Accessories</b>	<b>Description</b>		
PSMP-4S	Mating PT06E8-4S-SR connector		
5PSOR	FKM O-rings (5 pack)		

**Notes:** Sensors available standard with the sensor types shown above, for other sensor types or for lengths not shown please contact sales.

**Ordering Examples:** PR30-PT100A-0250, 4-wire RTD sensor, 100  $\Omega$  at 0°C, IEC Class A accuracy,  $\frac{7}{16}$ -20 mounting thread with FKM O-ring, 2.5" immersion length, 4-pin connector.

PR30-TH2252-0250, 2-wire thermistor sensor, 2252  $\Omega$  at 25°C,  $\pm 0.2^\circ\text{C}$  accuracy between 0 and 70°C,  $\frac{7}{16}$ -20 mounting thread with FKM O-ring, 2.5" immersion length, 4-pin connector.