

ELECTRONIC PRESSURE SWITCHES

INTEGRAL DISPLAY AND SOLID STATE OUTPUTS

TRODEKS®

PSW2000 Series



For Ordering
Information See
Page H-39

PSW2000 Series

- ✓ Dual Outputs:
Two SSRs or SSR and
Analog Output
- ✓ 3-Digit 10 mm
Red LED Display
- ✓ 10-Bit A/D Resolution

The PSW2000 high performance pressure switch features 304 SS wetted parts with a piezoresistive pressure sensor. It has 0.5% full scale accuracy, solid state switch output(s), and is easy to program, with 3 pushbuttons.

SPECIFICATIONS

Accuracy: 0.5% full scale

Linearity Error: $\pm 0.5\%$ full scale at 25°C (77°F)

Repeatability: $\pm 0.1\%$ full scale

Sensor: Piezoresistive measuring sensor

Material

Wetted Parts: 304 stainless steel

Seal: FKM (fluorelastomer)

Process Connection: 1/4-18 NPT; 7/16-20 SAE or G1/4 metric thread also available, consult engineering

Electrical Connection: M12x1 plug 4-pin

Power Supply: 15 to 28 Vdc @ 50 mA

A/D Converter Resolution: 10 bit (1024 steps per measure span)

Scanning Rate: 100/s (for peak value memory)

Analog Output (Optional, PSW2000):

Current Output: 4 to 20 mA

Load

Max RI: (12V)/20 mA; RI: 600 Ω at 24 Vdc

Load Influence: 0.3%/100 Ω

Voltage Output (Optional): 0 to 10 Vdc

Rating: Max 10 mA, short circuit-proof

Adjustment: 0 to 125% full scale

Solid State Switch Outputs: One standard; second output either switch or analog signal

Adjustment Range: 0 to 125% full scale

Hysteresis: 0 to 125% full scale

Delay: 0.0 to 9.9 seconds-adjustable

Contact Rating: 500 mA maximum, short circuit protected

Status Displays: Green LED, S1 and S2

Digital Display

Display Height: Red 3-digit 7-segment LED, 10 mm (0.39")

Display Range: -1 to 999

Display Rate: 20/s

Error Display: Red/orange LED, AL; main display message

Operation: 3 pushbutton keypad

PSW2002-750,
with PSW2000-CONN
optional DIN
connector, shown
actual size.



Temperature Range:

Media: -25 to 100°C (-13 to 212°F)

Electronics: -10 to 70°C (14 to 158°F)

Storage: -30 to 80°C (-22 to 178°F)

Temperature Influence:

$\pm 0.2\%$ FS/10 K

Protection Class: NEMA 4, IP65

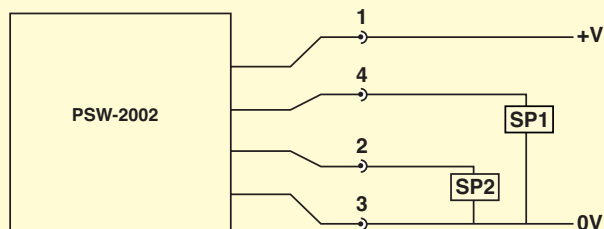
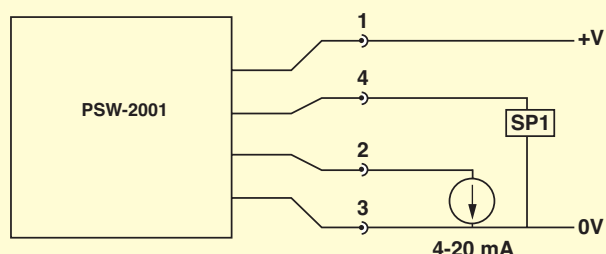
Compensation Range:

-10 to 70°C (14 to 158°F)

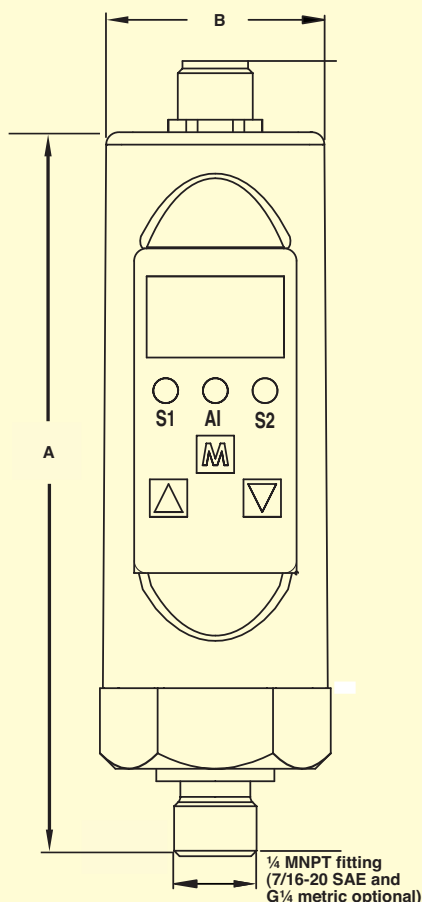
Weight: 200 g (0.4 lb)

ELECTRONIC PRESSURE SWITCHES WITH INTEGRAL DISPLAY AND SOLID STATE OUTPUTS

Dimensions: mm (inch)
 ϕ = diameter



MODEL	A	B
PSW2000	118 (4.64)	30 (1.18)



PSW2002-750, with PSW2000-CONN optional DIN connector, shown smaller than actual size.

PSW2001 SINGLE SWITCH AND ANALOG OUTPUT	PSW2002 DUAL SWITCHES NO ANALOG OUTPUT	RANGE	
		STANDARD	METRIC
ABSOLUTE PRESSURE RANGES-¼ NPT FITTING			
PSW2001-15A	PSW2002-15A	0 to 15 psia	0 to 1 bar ABS
PSW2001-75A	PSW2002-75A	0 to 75 psia	0 to 5 bar ABS
PSW2001-150A	PSW2002-150A	0 to 150 psia	0 to 10 bar ABS
GAGE PRESSURE RANGES-¼ NPT FITTING			
PSW2001-150	PSW2002-150	0 to 150 psig	0 to 10 bar
PSW2001-750	PSW2002-750	0 to 750 psig	0 to 50 bar
PSW2001-1.5K	PSW2002-1.5K	0 to 1500 psig	0 to 100 bar
PSW2001-3K	PSW2002-3K	0 to 3000 psig	0 to 200 bar
PSW2001-6K	PSW2002-6K	0 to 6000 psig	0 to 400 bar
PSW2001-9K	PSW2002-9K	0 to 9000 psig	0 to 600 bar

Comes complete with operator's manual.

To order with 7/16-20 SAE fitting add suffix "-S" to model number and consult sales for pricing.

To order with Metric G1/4 fitting add suffix "-M" to model number and consult sales for pricing.

Ordering Examples: PSW2002-15A, pressure switch with 0 to 1 bar abs (0 to 15 psig) pressure range with dual switching capability and 1/4 MNPT male pressure connection.

PSW2001-750, pressure switch with 0 to 50 bar (0 to 750 psig) range with single switch capability and 1/4 MNPT male pressure connection.

ACCESSORIES

MODEL NO.	DESCRIPTION
PSW2000-CONN	Mating M12 x 1, 4-pin connector for PSW2000 models